

VORTAC EPH 112.6 Chan 73	APP CRS 202°	Rwy Idg TDZE 1276 Apt Elev 1276
---------------------------------------	------------------------	---

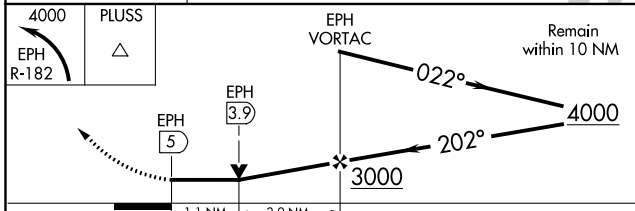
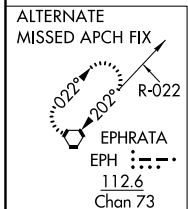
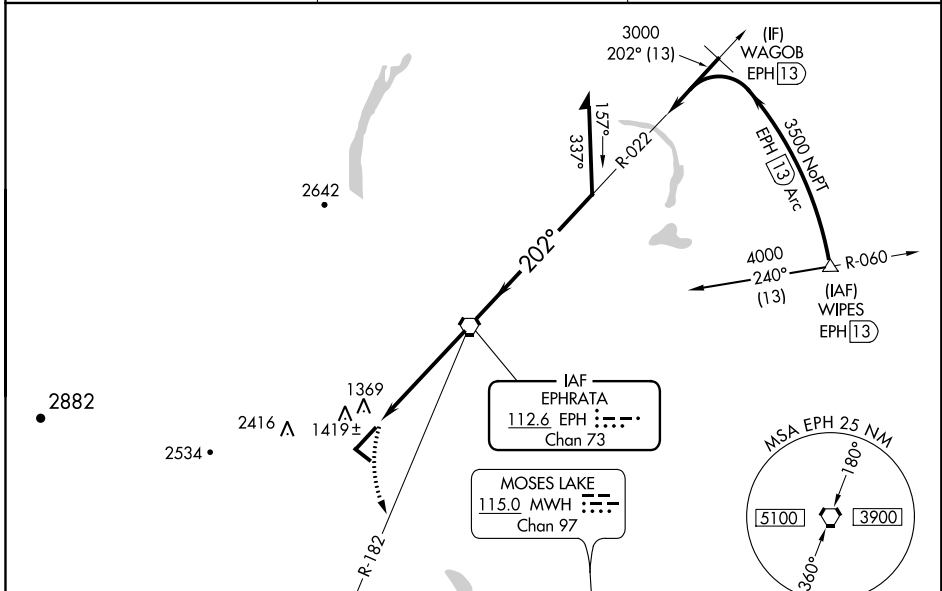
VOR RWY 21

EPHRATA MUNI (EPH)

⚠ When local altimeter setting not received, use Moses Lake/Grant County Intl altimeter setting and increase all MDA 40 feet, increase S-21 Cat D visibility ¼ mile. VDP NA when using Moses Lake/Grant County Intl altimeter setting. Final approach from EPH VORTAC holding pattern not authorized. Procedure turn required.

MISSED APPROACH: Climbing left turn to 4000 via EPH R-182 to PLUS INT/EPH 13.3 DME and hold. Continue climb-in-hold to 4000.

ASOS 135.775	GRANT COUNTY APP CON* 126.4 379.95	UNICOM 122.8 (CTAF)
------------------------	--	-------------------------------



ELEV 1276	TDZE 1276
202° 5 NM from FAF	
MIRL Rwy 11-29 and 3-21	
REIL Rwy 3, 11, 21 and 29	
FAF to MAP 5 NM	
Knots	60 90 120 150 180
Min:Sec	5:00 3:20 2:30 2:00 1:40

NW-1, 10 OCT 2019 to 07 NOV 2019

NW-1, 10 OCT 2019 to 07 NOV 2019