

VORTAC EPH <b>112.6</b> Chan 73	APP CRS <b>022°</b>	Rwy Idg TDZE <b>1269</b> Apt Elev <b>1276</b>	<b>5500</b>
---------------------------------------	------------------------	---	-------------

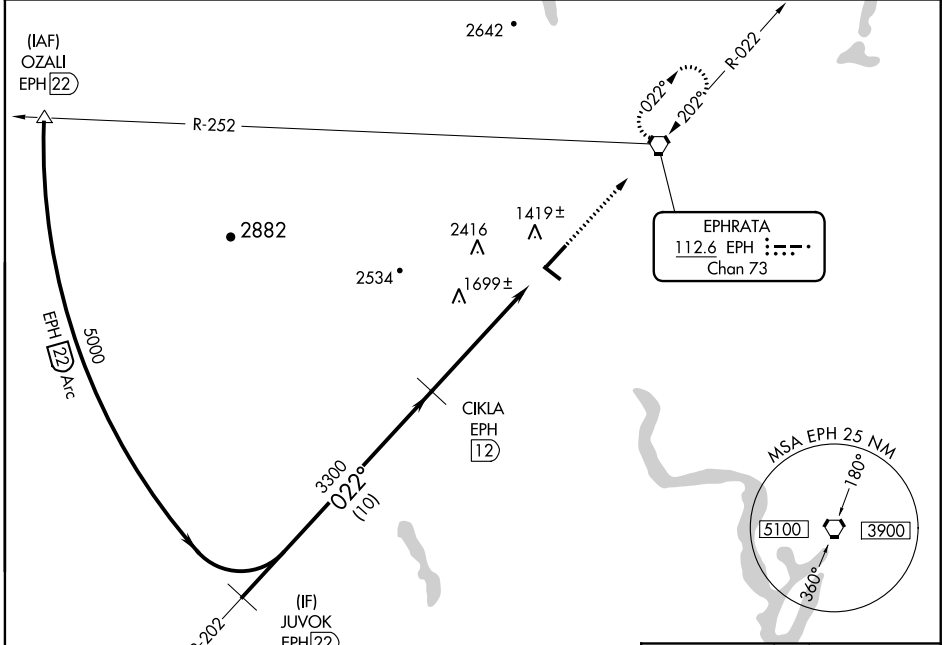
# VOR/DME RWY 3

EPHRATA MUNI (EPH)

▼ When local altimeter setting not received, use Moses Lake/Grant County  
 ▲ Intl altimeter setting and increase all MDA 40 feet.  
 VDP NA when using Moses Lake/Grant County Intl altimeter setting.

MISSED APPROACH: Climb to 4000 direct EPH VORTAC and hold, continue climb-in-hold to 4000.

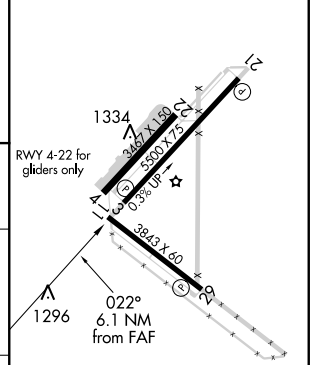
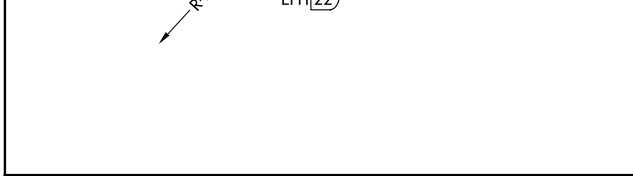
ASOS <b>135.775</b>	GRANT COUNTY APP CON * <b>126.4 379.95</b>	UNICOM <b>122.8 (CTAF)</b>
------------------------	---	-------------------------------



NW-1, 10 OCT 2019 to 07 NOV 2019

NW-1, 10 OCT 2019 to 07 NOV 2019

ELEV 1276	TDZE 1269
-----------	-----------



Procedure Turn NA	JUVOK EPH 22	VGS1 and descent angles not coincident (VGS1 Angle 3.00/TCH 40).	4000	EPH
	5000	022°	EPH 7.6	EPH 5.9
	10 NM	3300	4.4 NM	1.7 NM
		3.05°		
		TCH 60		

CATEGORY	A	B	C	D
S-3	1960-1 691 (700-1)		1960-2 691 (700-2)	1960-2 1/4 691 (700-2 1/4)
CIRCLING	1960-1 684 (700-1)		1960-2 684 (700-2)	2500-3 1224 (1300-3)

REIL Rwy 3, 11, 21 and 29  
 MIRL Rwy 11-29 and 3-21