

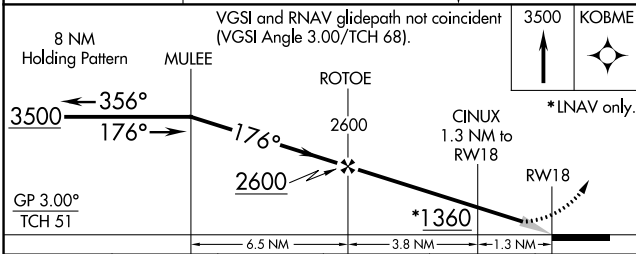
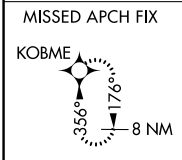
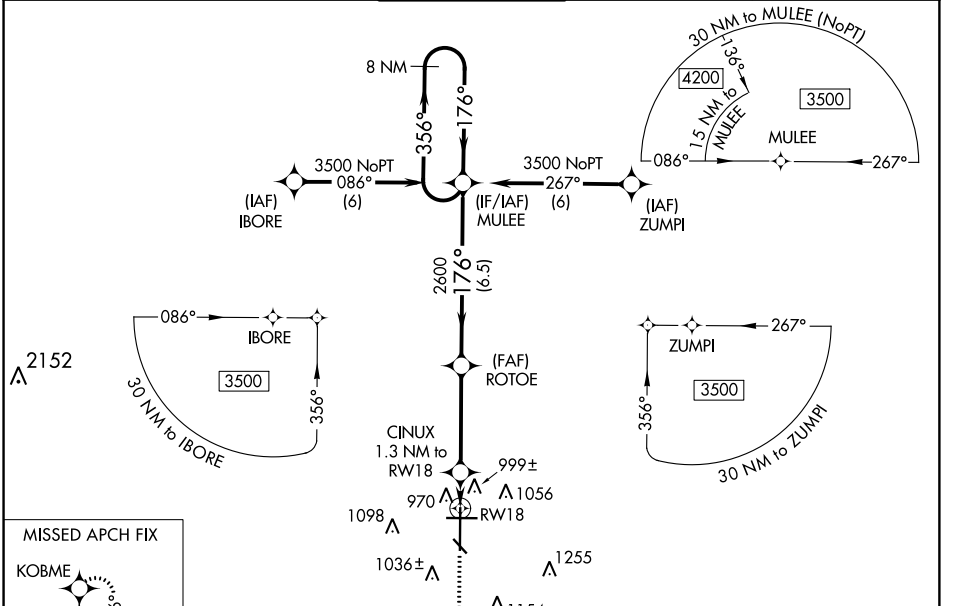
RNAV (GPS) RWY 18

HECTOR INTL (FAR)

WAAS CH 40006 W18A	APP CRS 176°	Rwy Idg TDZE Apt Elev	9001 900 901
--	------------------------	-----------------------------	---

RNP APCH.	MALSR	MISSED APPROACH: Climb to 3500 direct KOBME and hold.
<p>⚠ For inoperative MALSR, increase LPV Cat E visibility to RVR 4000 and LNAV/VNAV Cat E and LNAV Cat D and E to RVR 6000. For uncompensated Baro-VNAV systems, LNAV/VNAV NA below -16°C (4°F) or above 47°C (116°F). #RVR 1800 authorized with use of FD or AP or HUD to DA.</p>		

ATIS 124.5 379.2	FARGO APP CON 120.4 377.15	FARGO TOWER 133.8 290.4	GND CON 121.9 348.6	CLNC DEL 121.9 348.6
----------------------------	--------------------------------------	-----------------------------------	-------------------------------	--------------------------------



ELEV 901	D TDZE 900
----------	-------------------

HIRL Rwy 18-36
REIL Rwys 9 and 27
MIRL Rwys 9-27 and 13-31

CATEGORY	A	B	C	D	E
LPV DA#	1100/24		200 (200-½)		
LNAV/VNAV DA	1272/40		372 (400-¾)		
LNAV MDA	1260/24 360 (400-½)		1260/50 360 (400-1)		
C CIRCLING	1380-1 479 (500-1)	1520-1¾ 619 (700-1¾)	1620-2¼ 719 (800-2¼)	1620-2½ 719 (700-2½)	

NC-1, 10 OCT 2019 to 07 NOV 2019

NC-1, 10 OCT 2019 to 07 NOV 2019