

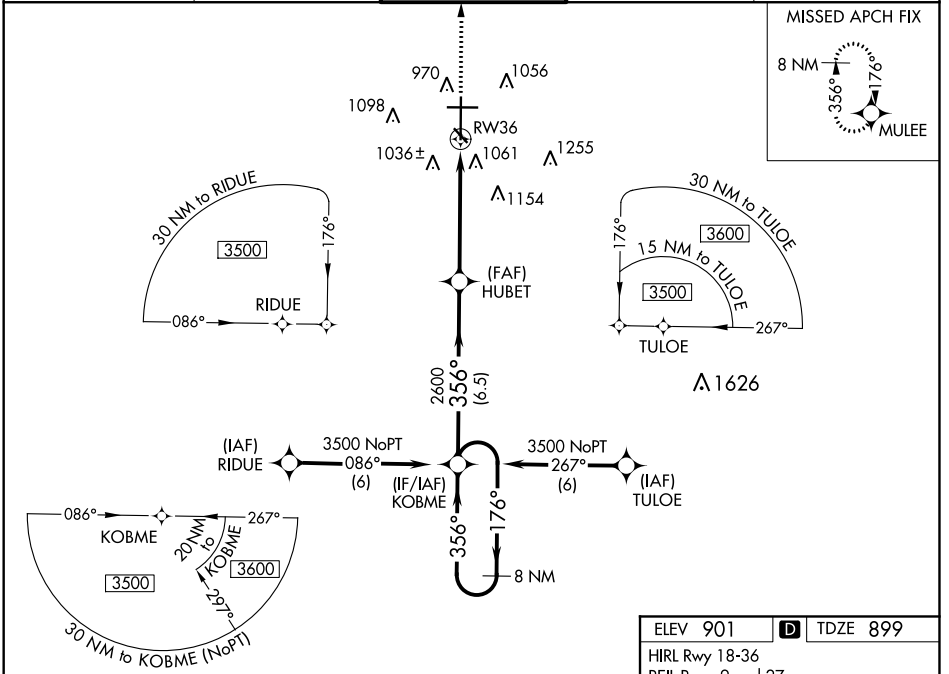
WAAS CH 50106 W36A	APP CRS 356°	Rwy Idg TDZE Apt Elev	9001 899 901
--	------------------------	-----------------------------	---

RNAV (GPS) RWY 36

HECTOR INTL (F.A.R.)

RNP APCH.	MALSR	MISSED APPROACH: Climb to 3500 direct MULEE and hold.
Baro-VNAV NA below -16°C (4°F). For inop MALSR, increase LPV Cat E visibility to RVR 4000, and increase LNAV/VNAV and LNAV Cat E visibility to 1½ mile.		

ATIS 124.5 379.2	FARGO APP CON 120.4 377.15	FARGO TOWER 133.8 290.4	GND CON 121.9 348.6	CLNC DEL 121.9 348.6
----------------------------	--------------------------------------	--	-------------------------------	--------------------------------



NC-1, 10 OCT 2019 to 07 NOV 2019

NC-1, 10 OCT 2019 to 07 NOV 2019

8 NM Holding Pattern KOBME HUBET RWY 36 MULEE *LNAV only. *1.4 NM to RWY 36 GP 3.00° TCH 55 3500 176° 356° 356° 2600 6.5 NM 3.7 NM 1.4 NM		ELEV 901 TDZE 899 HIRL Rwy 18-36 REIL Rwy 9 and 27 MIRL Rwy 9-27 and 13-31 6302 X 100 9001 X 150 36 31 356° to RWY 36			
CATEGORY	A	B	C	D	E
LPV DA	1150/24 251 (300-½)				
LNAV/VNAV DA	1360/50 461 (500-1)		1360/60 461 (500-1¼)		
LNAV MDA	1420/24 521 (600-½)	1420/50 521 (600-1)	1420/60 521 (600-1¼)		
CIRCLING	1420-1 519 (600-1)	1520-1¾ 619 (700-1¾)	1620-2¼ 719 (800-2¼)	1620-2½ 719 (800-2½)	