

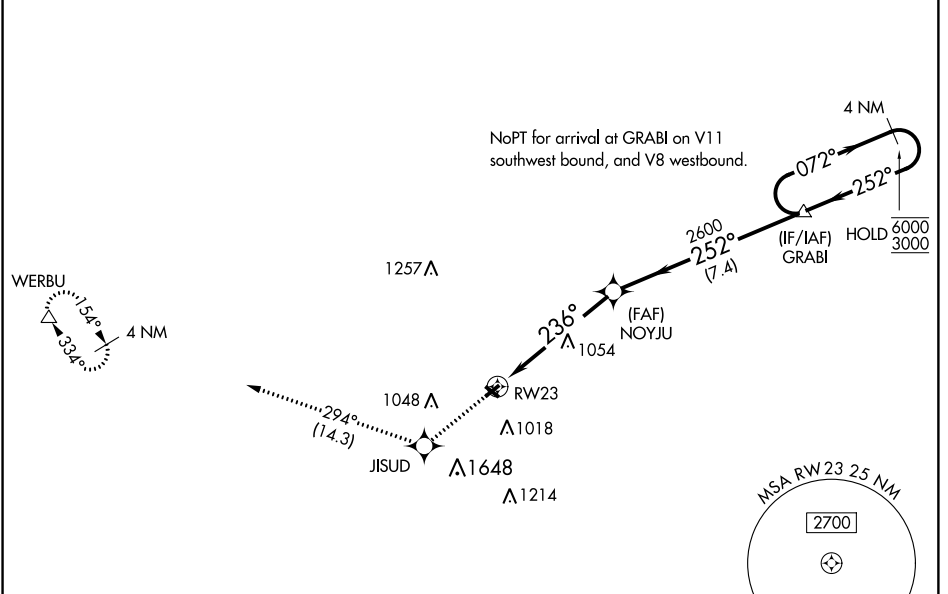
WAAS CH <b>65738</b> <b>W23A</b>	APP CRS <b>236°</b>	Rwy Idg TDZE Apt Elev	<b>3035</b> <b>834</b> <b>836</b>
--	------------------------	-----------------------------	---

# RNAV (GPS) RWY 23

SMITH FIELD (SMD)

RNP APCH.	<p>Procedure NA at night. Rwy 23 helicopter visibility reduction below 1 SM NA. When local altimeter setting not received, use Fort Wayne Intl altimeter setting and increase all MDA 40 feet and LP and LNAV Cat C visibility 1/8 SM.</p>	<p>MISSED APPROACH: Climb to 2700 direct JISUD and on track 294° to WERBU and hold.</p>
-----------	--	---

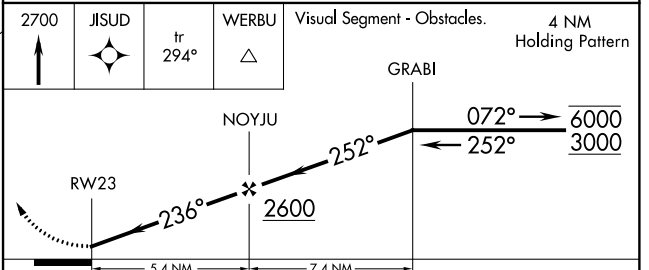
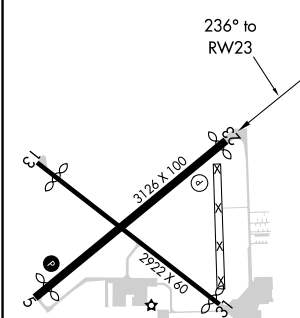
AWOS-3 <b>124,55</b>	FORT WAYNE APP CON <b>127.2 284.6</b>	UNICOM <b>122.8 (CTAF) 0</b>
-------------------------	--	---------------------------------



EC-2, 10 OCT 2019 to 07 NOV 2019

EC-2, 10 OCT 2019 to 07 NOV 2019

ELEV <b>836</b>	TDZE <b>834</b>
-----------------	-----------------



CATEGORY	A	B	C	D
LP MDA	1360-1	526 (600-1)	1360-1½ 526 (600-1½)	NA
LNAV MDA	1400-1	566 (600-1)	1400-1½ 566 (600-1½)	NA
<b>C</b> CIRCLING	1400-1	564 (600-1)	1940-3 1104 (1200-3)	NA