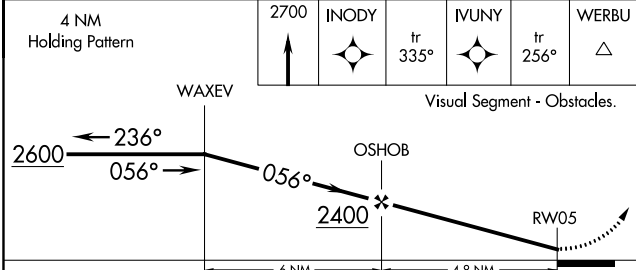
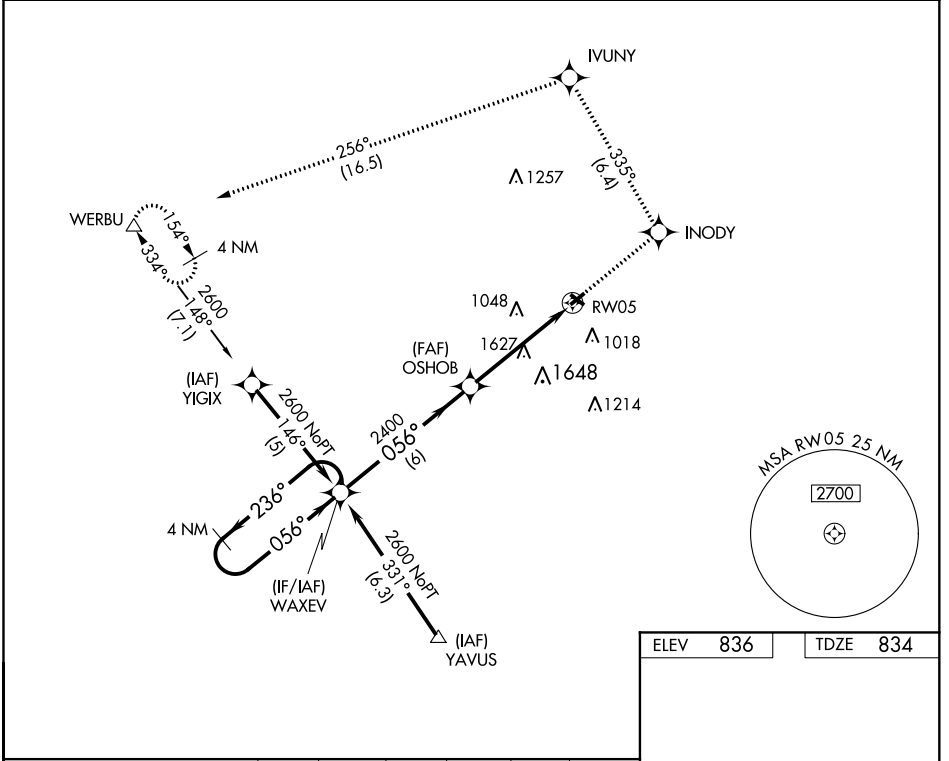


APP CRS	Rwy Idg	3035
056°	TDZE	834
	Apt Elev	836

RNAV (GPS) RWY 5

SMITH FIELD (SMD)

RNP APCH.		MISSED APPROACH: Climb to 2700 direct INODY and on track 335° to IVUNY and on track 256° to WERBU and hold.
▼ ▲ ❄ -24°C	When local altimeter setting not received, use Fort Wayne Intl altimeter setting and increase all MDA 40 feet. Procedure NA at night. Rwy 5 helicopter visibility reduction below 1 SM NA.	
AWOS-3 124.55	FORT WAYNE APP CON 127.2 284.6	UNICOM 122.8 (CTAF) 0



ELEV	836	TDZE	834
------	-----	------	-----

MIRL Rwy 5-23 and 13-31 0

CATEGORY	A	B	C	D
LNVA MDA	1880-1¼ 1046 (1100-1¼)	1880-1½ 1046 (1100-1½)	1880-3 1046 (1100-3)	NA
CIRCLING	1880-1¼ 1044 (1100-1¼)	1880-1½ 1044 (1100-1½)	1940-3 1104 (1200-3)	NA

EC-2, 10 OCT 2019 to 07 NOV 2019

EC-2, 10 OCT 2019 to 07 NOV 2019