

VOR OLK <b>110.4</b>	APP CRS <b>114°</b>	Rwy Idg <b>2623</b>
		TDZE <b>836</b>
		Apt Elev <b>836</b>

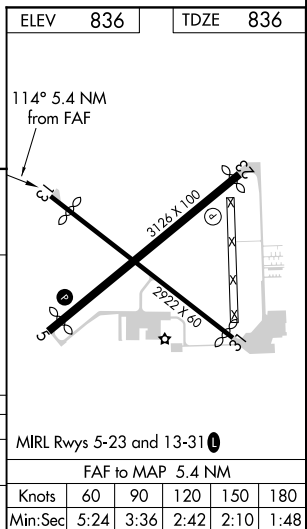
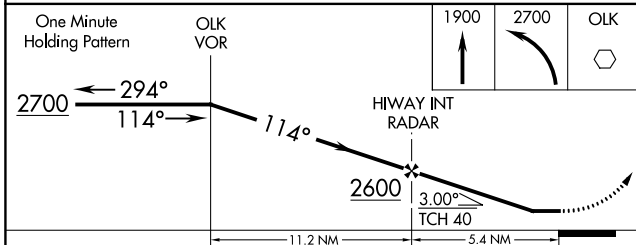
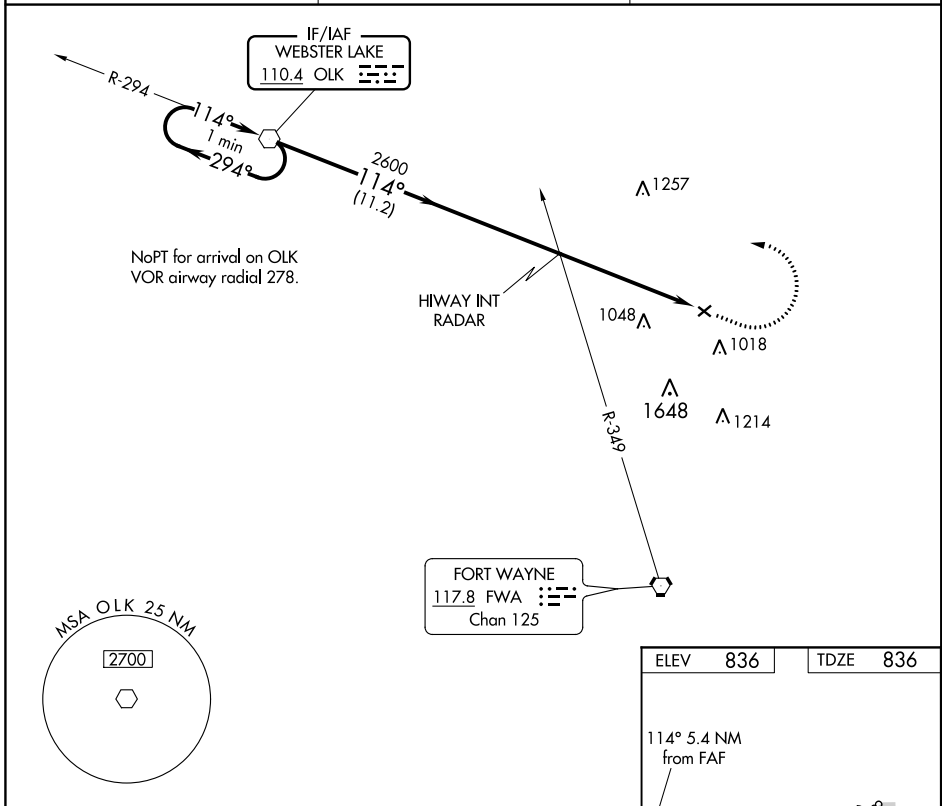
# VOR RWY 13

SMITH FIELD (SMD)

**⚠** NA Rwy 13 helicopter visibility reduction below 1 SM NA. Procedure NA at night. When local altimeter setting not received, use Fort Wayne Intl altimeter setting and increase all MDA 40 feet and S-13 Cat C visibility 1/8 SM.

**⚠** MISSED APPROACH: Climb to 1900 then climbing left turn to 2700 direct OLK VOR and hold.

AWOS-3 <b>124.55</b>	FORT WAYNE APP CON <b>127.2 284.6</b>	UNICOM <b>122.8 (CTAF) 0</b>
-------------------------	------------------------------------------	---------------------------------



CATEGORY	A	B	C	D
S-13	1360-1	524 (600-1)	1360-1½ 524 (600-1½)	NA
<b>C</b> CIRCLING	1400-1	564 (600-1)	1940-3 1104 (1200-3)	NA

EC-2, 10 OCT 2019 to 07 NOV 2019

EC-2, 10 OCT 2019 to 07 NOV 2019