


LOC I-GRI <b>111.9</b>	APP CRS <b>353°</b>	Rwy Idg <b>7002</b> TDZE <b>1847</b> Apt Elev <b>1847</b>
---------------------------	------------------------	-----------------------------------------------------------------

# ILS or LOC RWY 35

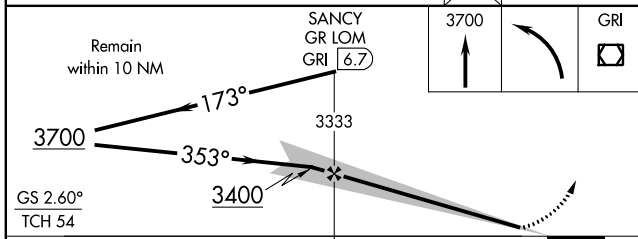
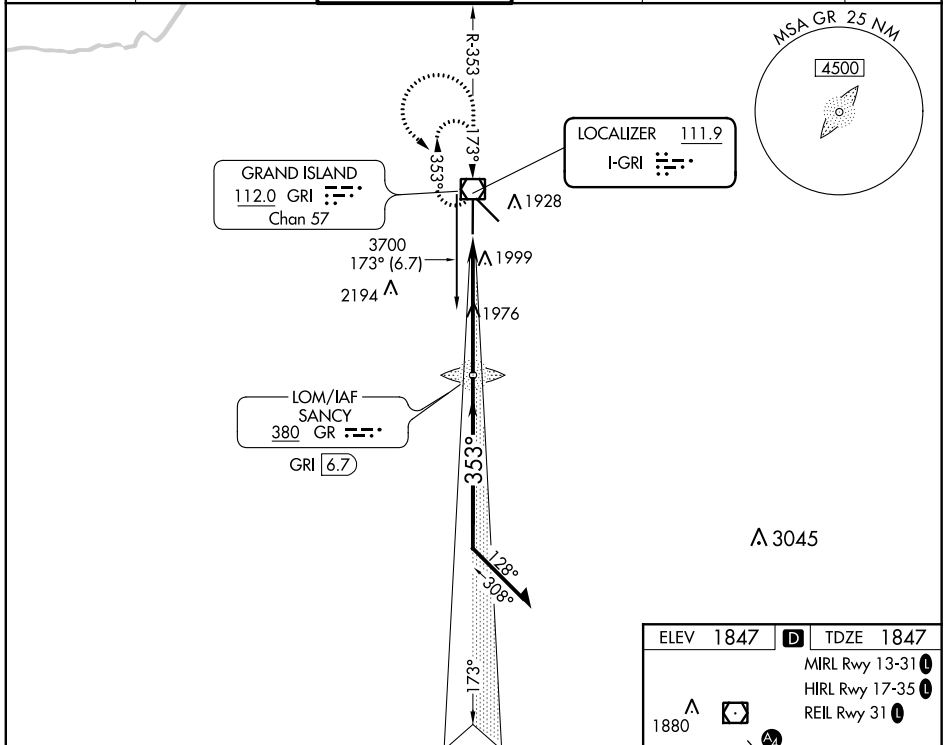
CENTRAL NEBRASKA RGNL (GRI)

**⚠** When local altimeter setting not received, use Aurora altimeter setting and increase all DA/MDA 60 feet, increase S-LOC 35 Cat C/D visibility to RVR 4500.  
**⚠** \* RVR 1800 authorized with the use of FD or AP or HUD to DA (NA when using Aurora altimeter setting).

MALSRL  


MISSED APPROACH: Climb to 3700 then left turn direct GRI VOR/DME and hold.

ATIS <b>127.4</b>	MINNEAPOLIS CENTER <b>119.4 278.8</b>	GRAND ISLAND TOWER* <b>118.2 (CTAF) 259.3</b>	GND CON <b>121.9 259.3</b>	CLNC DEL <b>121.9</b> <b>126.05</b> (when tower closed)	UNICOM <b>122.95</b>
----------------------	------------------------------------------	--------------------------------------------------	-------------------------------	---------------------------------------------------------------	-------------------------



ELEV 1847	TDZE 1847
MIRL Rwy 13-31	HIRL Rwy 17-35
REIL Rwy 31	

Diagram details:
 

- Altitudes: 1880, 1908, 1883, 1847
- Distance: 5.1 NM from FAF
- FAF to MAP 5.1 NM

Knots	60	90	120	150	180
Min:Sec	5:06	3:24	2:33	2:02	1:42

CATEGORY	A	B	C	D
S-ILS 35	* 2047/24		200 (200-½)	
S-LOC 35	2240/24	393 (400-½)	2240/35	393 (400-¾)
CIRCLING	2300-1	453 (500-1)	2300-1½ 453 (500-1½)	2400-2 553 (600-2)

NC-2, 10 OCT 2019 to 07 NOV 2019

NC-2, 10 OCT 2019 to 07 NOV 2019