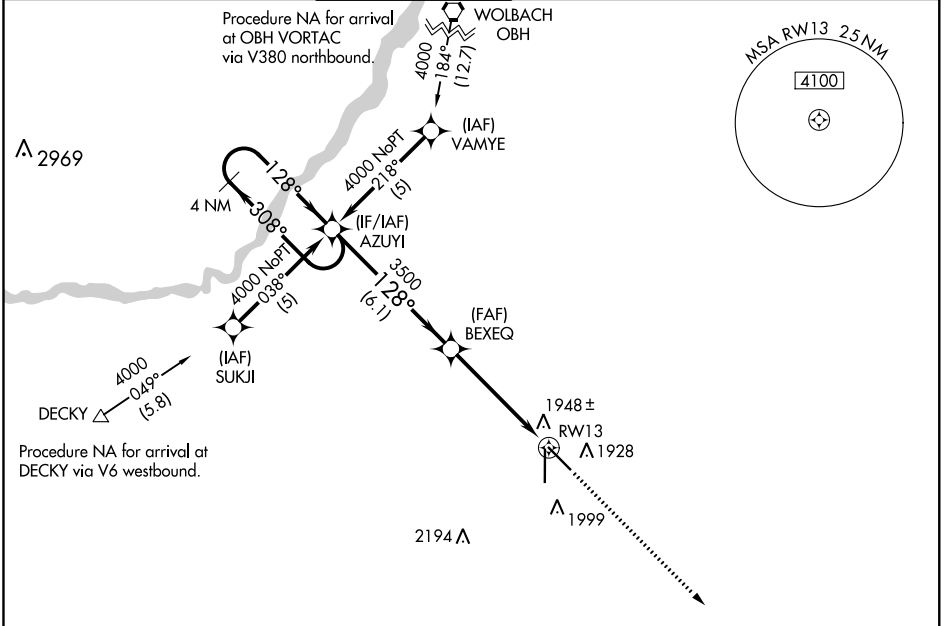


WAAS CH 53399 W13A	APP CRS 128°	Rwy Idg 6608 TDZE 1842 Apt Elev 1847
--	------------------------	---

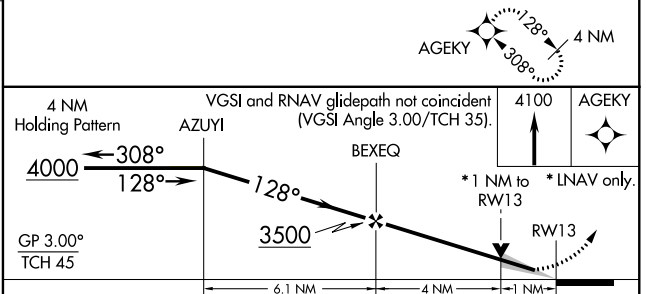
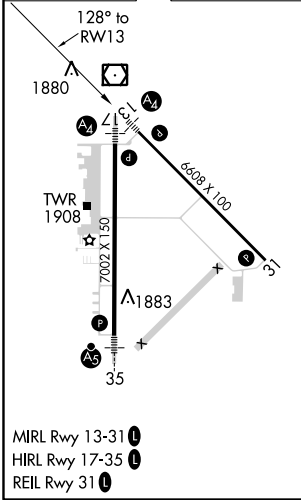
RNAV (GPS) RWY 13

CENTRAL NEBRASKA RGNL (GRI)

<p>⚠ DME/DME RNP-0.3 NA. Baro-VNAV NA below -18°C (0°F). If local altimeter setting not received, use Aurora altimeter setting and increase all DAs/MDAs 60 feet. Baro-VNAV and VDP NA when using Aurora altimeter setting. Inop table does not apply to LPV and LNAV/VNAV.</p>	<p>MALS </p>		<p>MISSED APPROACH: Climb to 4100 direct AGEKY and hold.</p>		
	<p>ATIS 127.4</p>	<p>MINNEAPOLIS CENTER 119.4 278.8</p>	<p>GRAND ISLAND TOWER* 118.2 (CTAF) 259.3</p>	<p>GND CON 121.9 259.3</p>	<p>CLNC DEL 121.9 (when tower closed)</p>



ELEV 1847	D	TDZE 1842
-----------	----------	-----------



CATEGORY	A	B	C	D
LPV DA		2092-3/4	250 (300-3/4)	
LNAV/ VNAV DA		2247-1 1/2	405 (400-1 1/2)	
LNAV MDA		2200-3/4	358 (400-3/4)	2200-1 1/4 358 (400-1 1/4)
CIRCLING		2300-1 1/2	453 (500-1 1/2)	2400-2 553 (600-2)

NC-2, 10 OCT 2019 to 07 NOV 2019

NC-2, 10 OCT 2019 to 07 NOV 2019