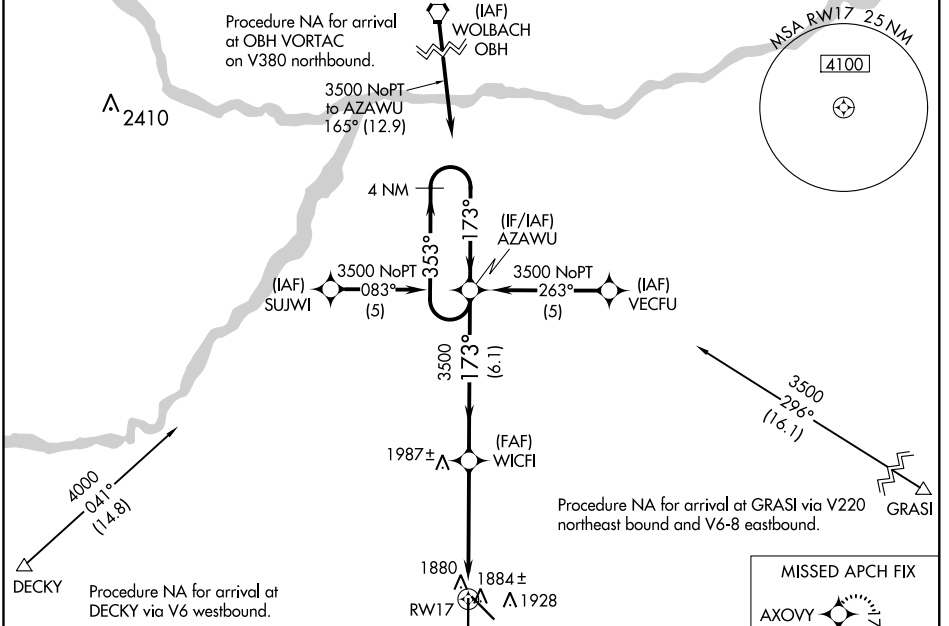


| | | |
|--|------------------------|---|
| WAAS CH 60999 W17A | APP CRS 173° | Rwy Idg 7002 TDZE 1844 Apt Elev 1847 |
|--|------------------------|---|

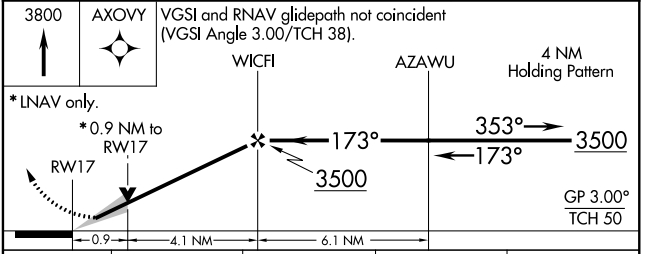
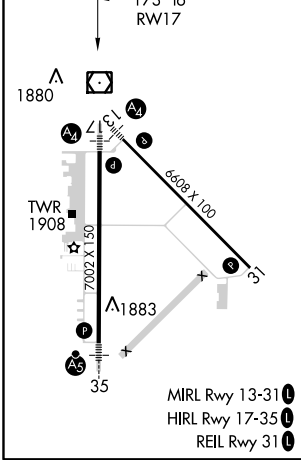
RNAV (GPS) RWY 17

CENTRAL NEBRASKA RGNL (GRI)

| | | | | | |
|---|--------------------------|---|--|-----------------------------------|--|
| <p>⚠ DME/DME RNP-0.3 NA. Baro-VNAV NA below -18°C [0°F]. If local altimeter setting not received, use Aurora altimeter setting and increase all DAs/MDAs 60 feet. Baro-VNAV and VDP NA when using Aurora altimeter setting. Inoperative table does not apply to LPV.</p> | MALS | MISSED APPROACH: Climb to 3800 direct AXOVY and hold. | | | |
| | <p>ATIS 127.4</p> | <p>MINNEAPOLIS CENTER 119.4 278.8</p> | <p>GRAND ISLAND TOWER* 118.2 (CTAF) 0 259.3</p> | <p>GND CON 121.9 259.3</p> | <p>CLNC DEL 121.9 126.05 (when tower closed)</p> |



| | | |
|------------------|----------|------------------|
| ELEV 1847 | D | TDZE 1844 |
|------------------|----------|------------------|



| CATEGORY | A | B | C | D |
|--------------|---|---|--|---|
| LPV DA | 2094- ³ / ₄ 250 (300- ³ / ₄) | | | |
| LNAV/VNAV DA | 2138- ³ / ₄ 294 (300- ³ / ₄) | | 2138-1 294 (300-1) | |
| LNAV MDA | 2160- ³ / ₄ 316 (400- ³ / ₄) | | 2160-1 316 (400-1) | |
| CIRCLING | 2300-1 453 (500-1) | | 2300-1 ¹ / ₂ 453 (500-1 ¹ / ₂) 2400-2 553 (600-2) | |

NC-2, 10 OCT 2019 to 07 NOV 2019

NC-2, 10 OCT 2019 to 07 NOV 2019