

APP CRS <b>308°</b>	Rwy Idg <b>6608</b>
	TDZE <b>1844</b>
	Apt Elev <b>1847</b>

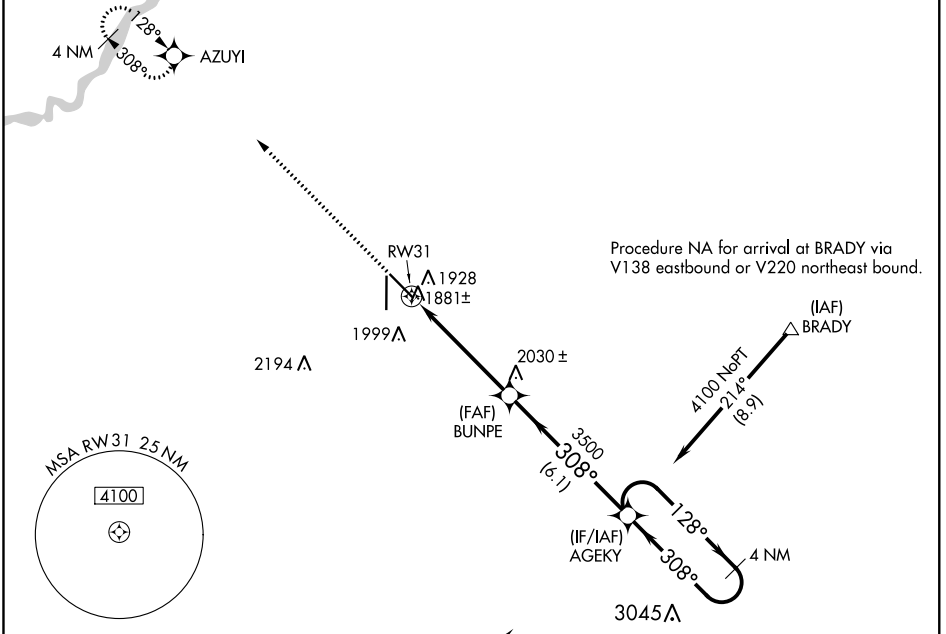
# RNAV (GPS) RWY 31

CENTRAL NEBRASKA RGNL (GRI)

**⚠** DME/DME RNP-0.3 NA. If local altimeter setting not received, use Aurora altimeter setting and increase all MDAs 60 feet. VDP NA when using Aurora altimeter setting.

**⚠** MISSED APPROACH: Climb to 4000 direct AZUYI and hold.

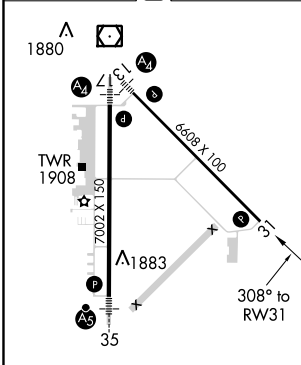
ATIS <b>127.4</b>	MINNEAPOLIS CENTER <b>119.4 278.8</b>	GRAND ISLAND TOWER ★ <b>118.2 (CTAF) 0 259.3</b>	GND CON <b>121.9 259.3</b>	CLNC DEL <b>126.05</b> (when tower closed)	UNICOM <b>122.95</b>
----------------------	--	---	-------------------------------	---	-------------------------



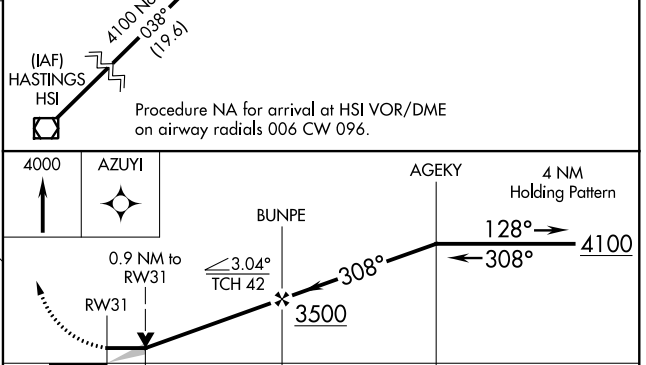
NC-2, 10 OCT 2019 to 07 NOV 2019

NC-2, 10 OCT 2019 to 07 NOV 2019

ELEV 1847	<b>D</b>	TDZE 1844
-----------	----------	-----------



MIRL Rwy 13-31 **Ⓛ**  
HIRL Rwy 17-35 **Ⓛ**  
REIL Rwy 31 **Ⓛ**



CATEGORY	A	B	C	D
LNAV MDA	2180-1 336 (400-1)			
CIRCLING	2300-1 453 (500-1)	2300-1½ 453 (500-1½)		2400-2 553 (600-2)