

VOR/DME GRI 112.0 Chan 57	APP CRS 313°	Rwy ldg TDZE Apt Elev 6608 1844 1847
--	------------------------	--

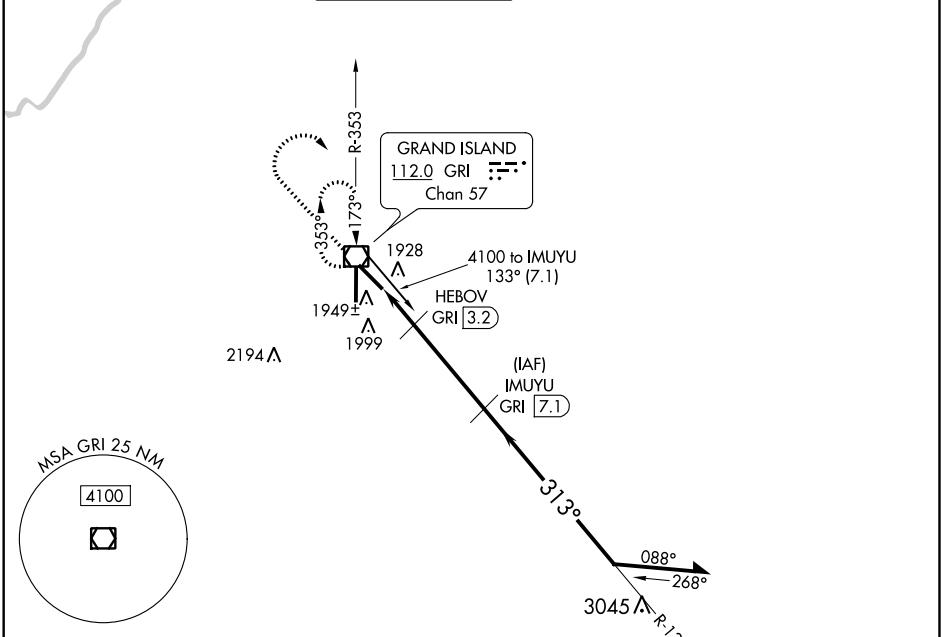
VOR/DME RWY 31

CENTRAL NEBRASKA RGNL (GRI)

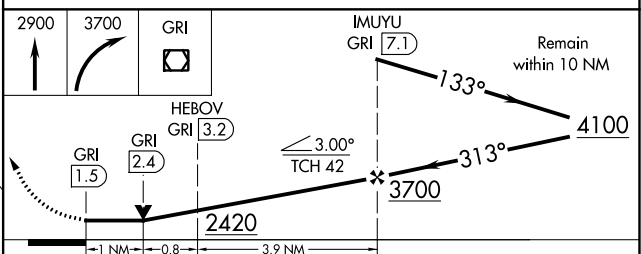
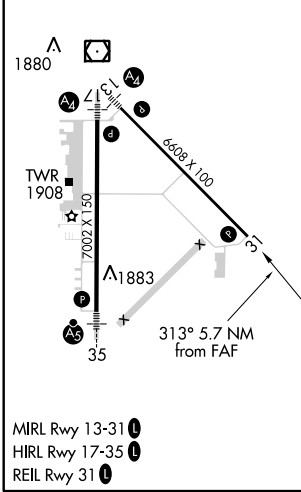
⚠ If local altimeter setting not received, use Aurora altimeter setting and increase all MDAs 60 feet.
⚠ VDP NA when using Aurora altimeter setting.

MISSED APPROACH: Climb to 2900 then climbing right turn to 3700 direct GRI VOR/DME and hold.

ATIS 127.4	MINNEAPOLIS CENTER 119.4 278.8	GRAND ISLAND TOWER* 118.2 (CTAF) 259.3	GND CON 121.9 259.3	CLNC DEL 121.9 126.05 (when tower closed)	UNICOM 122.95
----------------------	--	--	-------------------------------	---	-------------------------



ELEV 1847	D	TDZE 1844
-----------	----------	-----------



CATEGORY	A	B	C	D
S-31	2200-1	356 (400-1)	2200-1¼ 356 (400-1¼)	2200-1¼ 356 (400-1¼)
CIRCLING	2300-1	453 (500-1)	2300-1½ 453 (500-1½)	2400-2 553 (600-2)

NC-2, 10 OCT 2019 to 07 NOV 2019

NC-2, 10 OCT 2019 to 07 NOV 2019