

VOR/DME GRI <b>112.0</b> Chan <b>57</b>	APP CRS <b>353°</b>	Rwy Idg <b>7002</b> TDZE <b>1847</b> Apt Elev <b>1847</b>
---	------------------------	---

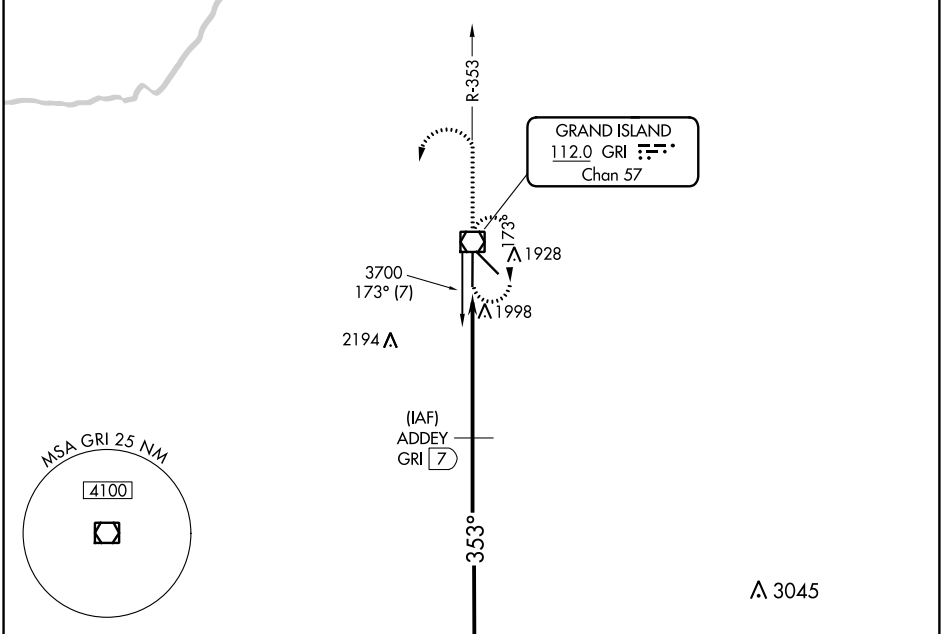
**VOR/DME RWY 35**  
CENTRAL NEBRASKA RGNL (GRI)

**V** VDP NA when using Aurora altimeter setting. When local altimeter setting not received, use Aurora altimeter setting and increase all MDA 60 feet. For inop MALSRL, increase S-35 Cat D visibility to 1 1/4 mile.

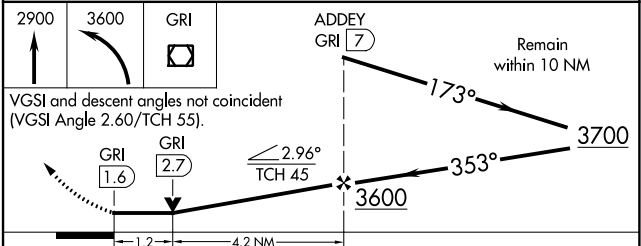
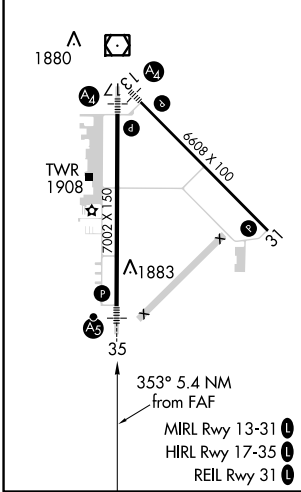


MISSED APPROACH: Climb to 2900, then climbing left turn to 3600 direct GRI VOR/DME and hold.

ATIS <b>127.4</b>	MINNEAPOLIS CENTER <b>119.4 278.8</b>	GRAND ISLAND TOWER* <b>118.2 (CTAF) 0 259.3</b>	GND CON <b>121.9 259.3</b>	CLNC DEL <b>121.9</b> <b>126.05</b> (when tower closed)	UNICOM <b>122.95</b>
----------------------	--	--	-------------------------------	---	-------------------------



ELEV 1847	<b>D</b>	TDZE 1847
-----------	----------	-----------



CATEGORY	A	B	C	D
S-35	2260-1/2	413 (500-1/2)	2260-3/4 413 (500-3/4)	2260-1 413 (500-1)
CIRCLING	2300-1	453 (500-1)	2300-1 1/2 453 (500-1 1/2)	2400-2 553 (600-2)

NC-2, 10 OCT 2019 to 07 NOV 2019

NC-2, 10 OCT 2019 to 07 NOV 2019