


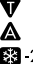
LOC I-LSE 111.1	APP CRS 180°	Rwy Idg 8536
		TDZE 653
		Apt Elev 656


ILS or LOC RWY 18

LA CROSSE RGNL (LSE)

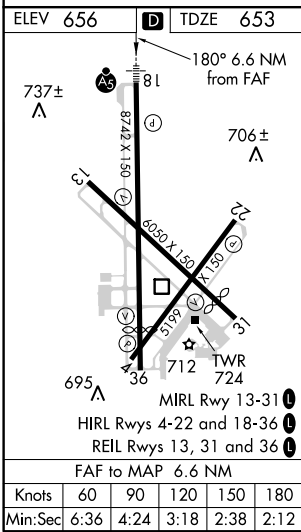
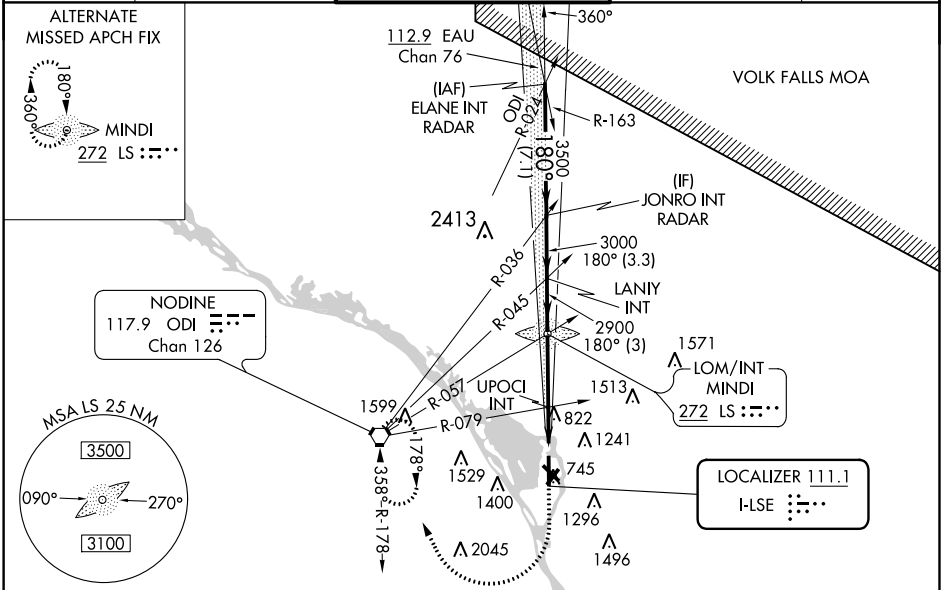
RADAR required for procedure entry.

MALS  MISSED APPROACH: Climb to 2400 then climbing right turn to 3400 direct ODI VORTAC and hold.

 Circling Rwy 22 NA at night. For inop ALS increase UPOCI fix minimums S-LOC Cats C/D visibility to 1 1/2 SM.

 -20°C

ATIS 124.95	MINNEAPOLIS CENTER 128.6 363.0	LA CROSSE TOWER ★ 118.45 (CTAF) 251.075	GND CON 121.8	UNICOM 122.95
-----------------------	--	---	-------------------------	-------------------------



	JONRO INT RADAR	LANIY INT	MINDI LOM/INT	UPOCI INT	ODI
	3500	3000	2864	2900	2400 3400
	180°	180°	180°	180°	* LOC only.
	3.3 NM	3 NM	3.7 NM	2.9 NM	
CATEGORY	A	B	C	D	
S-ILS 18	853-1/2				200 (200-1/2)
S-LOC 18	1600-3/4	947 (1000-3/4)	1600-2	947 (1000-2)	
CIRCLING	1600-1 1/4	944 (1000-1 1/4)	1760-3	1820-3	1104 (1200-3) 1164 (1200-3)
UPOCI FIX MINIMUMS (DUAL VOR RECEIVERS REQUIRED)					
S-LOC 18	1140-1 1/2	487 (500-1/2)	1140-1	487 (500-1)	
CIRCLING	1140-1	484 (500-1)	1460-1	804 (900-1)	1760-3 1820-3 1104 (1200-1) 1164 (1200-3)

EC-3, 10 OCT 2019 to 07 NOV 2019

EC-3, 10 OCT 2019 to 07 NOV 2019