

LOC/DME I-LNR 108.35 Chan 20 (Y)	APP CRS 270°	Rwy Idg 5000 TDZE 717 Apt Elev 717
---	------------------------	---

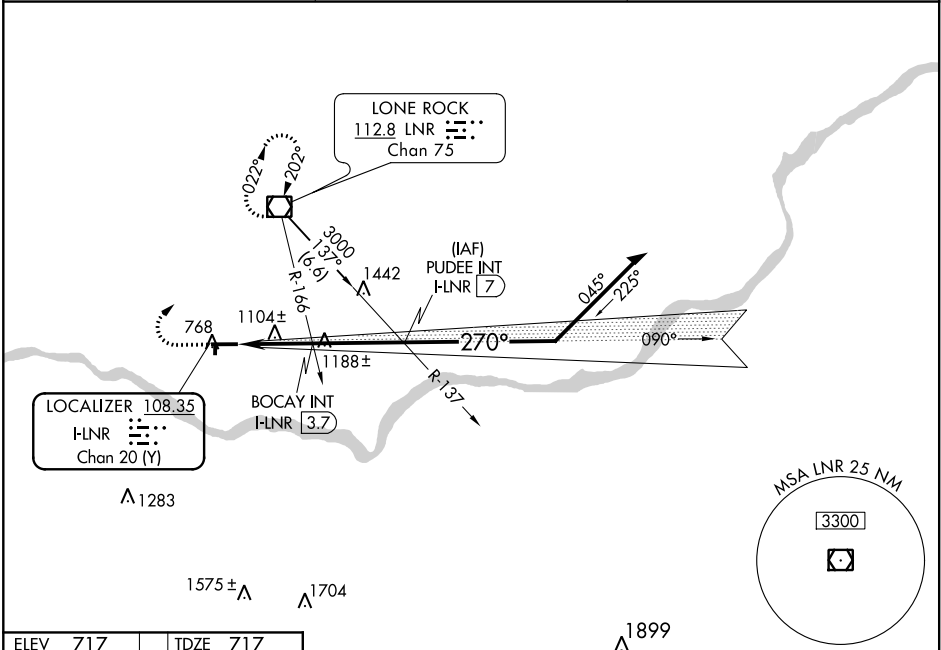
LOC RWY 27

TRI-COUNTY RGNL (LNR)

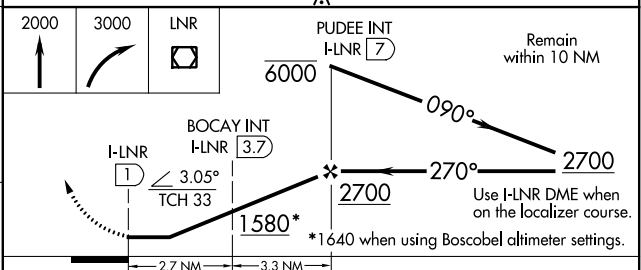
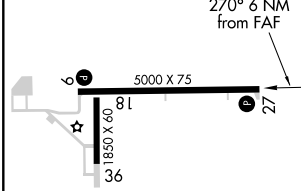
NA If local altimeter setting not received, use Boscobel altimeter setting and increase all MDAs 60 feet. Helicopter visibility reduction below 3/4 NA. Night landing: Rwy 18 NA.

MISSED APPROACH: Climb to 2000 then climbing right turn to 3000 direct LNR VOR/DME and hold.

ASOS 119.425	MADISON APP CON ★ 135.45 343.7	UNICOM 123.0 (CTAF) 0
------------------------	--	---------------------------------



ELEV 717	TDZE 717
----------	----------



CATEGORY	A	B	C	D
S-27	1580-1 863 (900-1)	1580-1¼ 863 (900-1¼)	1580-2½ 863 (900-2½)	NA
CIRCLING	1580-1 863 (900-1)	1580-1¼ 863 (900-1¼)	1580-2½ 863 (900-2½)	NA
BOCAY FIX MINIMUMS				
S-27	1360-1	643 (700-1)	1360-1¼ 643 (700-1¼)	NA
CIRCLING	1500-1 783 (800-1)	1500-1¼ 783 (800-1¼)	1500-2¼ 783 (800-2¼)	NA

REIL Rwy 27 0
MIRL Rwys 9-27 and 18-36 0
FAF to MAP 6 NM

Knots	60	90	120	150	180
Min:Sec	6:00	4:00	3:00	2:24	2:00

EC-3, 10 OCT 2019 to 07 NOV 2019

EC-3, 10 OCT 2019 to 07 NOV 2019