

WAAS CH <b>78206</b> <b>W09A</b>	APP CRS <b>090°</b>	Rwy ldg TDZE Apt Elev	<b>5000</b> <b>717</b> <b>717</b>
--	------------------------	-----------------------------	---

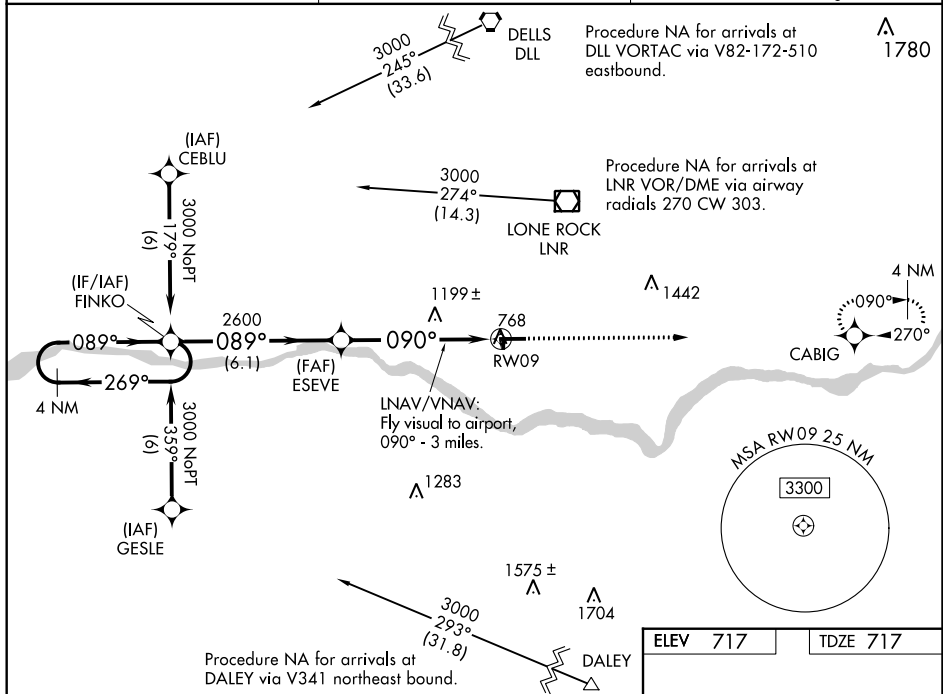
# RNAV (GPS) RWY 9

TRI-COUNTY RGNL (LNR)

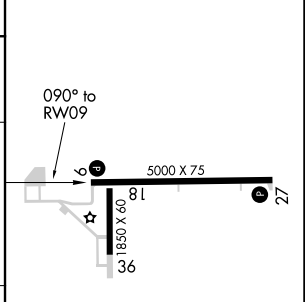
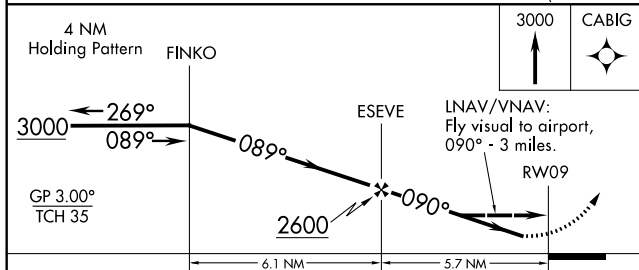
**⚠** Helicopter visibility reduction below ¾ SM NA. DME/DME RNP-0.3 NA.  
**⚠** For uncompensated Baro-VNAV systems, LNAV/VNAV NA below -16°C (4°F) or above 54°C (130°F). When local altimeter setting not received, use Boscobel altimeter setting and increase all DAs/MDAs 60 feet, and all visibilities ¼ mile. Baro-VNAV NA when using Boscobel altimeter setting. Night landing: Rwy 18 NA.

**MISSED APPROACH:**  
Climb to 3000 direct CABIG and hold.

ASOS <b>119.425</b>	MADISON APP CON * <b>135.45 343.7</b>	UNICOM <b>123.0 (CTAF)</b>
------------------------	--	-------------------------------



ELEV 717	TDZE 717
----------	----------



CATEGORY	A	B	C	D
LPV DA	994-1 277 (300-1)			NA
LNAV/VNAV DA	1659-2	942 (1000-2)	1659-2¾ 942 (1000-2¾)	NA
LNAV MDA	1460-1 743 (800-1)	1460-1¼ 743 (800-1¼)	1460-2¼ 743 (800-2¼)	NA
CIRCLING	1520-1 803 (900-1)	1520-1¼ 803 (900-1¼)	1520-2¼ 803 (900-2¼)	NA

REIL Rwy 27 **⚠**  
MIRL Rwy 9-27 and 18-36 **⚠**

EC-3, 10 OCT 2019 to 07 NOV 2019

EC-3, 10 OCT 2019 to 07 NOV 2019