

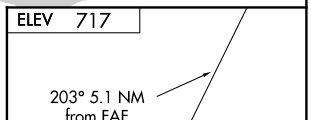
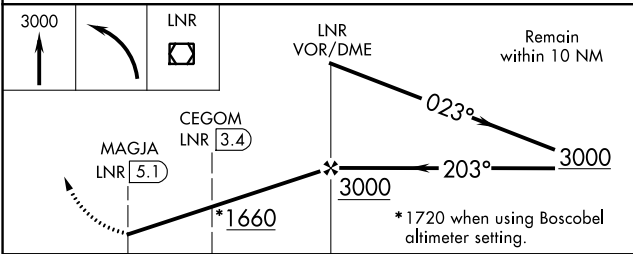
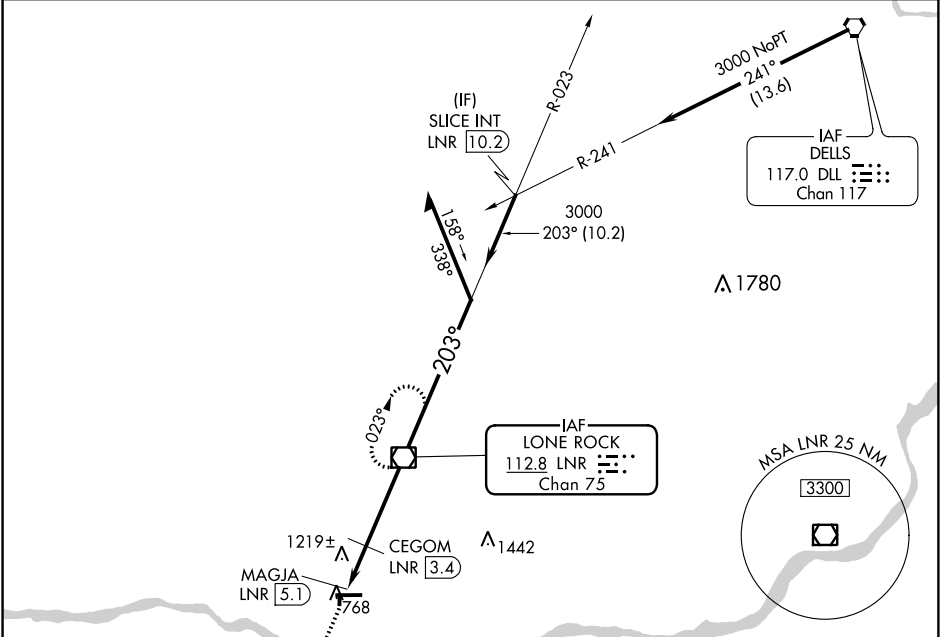
VOR/DME LNR 112.8 Chan 75	APP CRS 203°	Rwy Idg TDZE Apt Elev N/A N/A 717
---	------------------------	---

VOR-A
TRI-COUNTY RGNL (LNR)

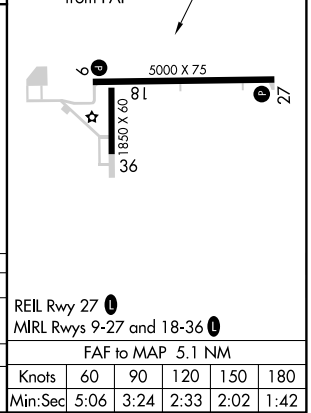
⚠ When local altimeter setting not received, use Boscobel altimeter setting and increase all MDAs 60 feet, and all visibilities ¼ mile. Night landing: Rwy 18 NA. Helicopter visibility reduction below 1 SM NA.

MISSED APPROACH: Climb to 3000 then left turn direct LNR VOR/DME and hold.

ASOS 119.425	MADISON APP CON ★ 135.45 343.7	UNICOM 123.0 (CTAF) 0
------------------------	--	---------------------------------



CATEGORY	A	B	C	D
CIRCLING	1660-1¼ 943 (1000-1¼)		1660-2¾ 943 (1000-2¾)	NA
CEGOM FIX MINIMUMS				
CIRCLING	1520-1 803 (900-1)	1520-1¼ 803 (900-1¼)	1520-2¼ 803 (900-2¼)	NA



EC-3, 10 OCT 2019 to 07 NOV 2019

EC-3, 10 OCT 2019 to 07 NOV 2019