

WAAS CH 77603 W09A	APP CRS 089°	Rwy Idg TDZE Apt Elev	8175 857 869
--	------------------------	-----------------------------	---

RNAV (GPS) RWY 9

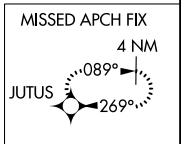
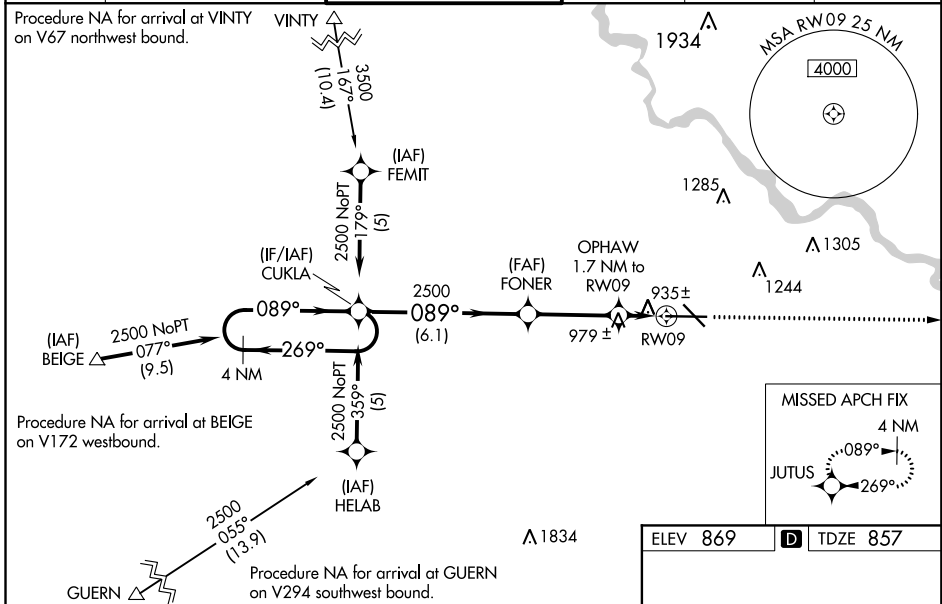
THE EASTERN IOWA (CID)

⚠ Baro-VNAV NA when using Iowa City altimeter setting. For uncompensated Baro-VNAV systems, LNAV/VNAV NA below -16°C (4°F) or above 47°C (116°F). DME/DME RNP-0.3 NA. When local altimeter setting not received, use Iowa City altimeter setting and increase all DA 64 feet and all MDA 80 feet; increase LNAV/VNAV all Cats visibility to RVR 5000 and LNAV Cat C to RVR 4000. For inoperative MALS R increase LNAV Cat D visibility to RVR 6000. VDP NA with Iowa City altimeter setting. When using Iowa City altimeter setting; for inoperative MALS R, increase LPV all Cats visibility to RVR 5000, LNAV Cat C visibility to RVR 6000 and LNAV Cat D visibility to 1½ miles.
#RVR 1800 authorized with use of FD or AP or HUD to DA, NA when using Iowa City altimeter setting.

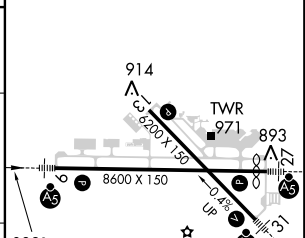
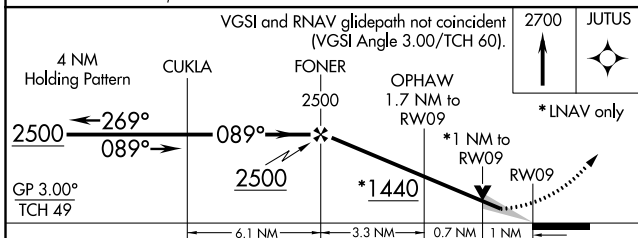
MALS R

MISSED APPROACH:
Climb to 2700 direct JUTUS and hold.

ATIS 124.15	CEDAR RAPIDS APP CON * 119.7 266.8	CEDAR RAPIDS TOWER * 118.7 (CTAF) 0 266.8	GND CON 121.6	CLNC DEL 125.45	UNICOM 122.95
-----------------------	--	---	-------------------------	---------------------------	-------------------------



ELEV 869	D TDZE 857
----------	-------------------



CATEGORY	A	B	C	D
LPV DA#		1057/24	200 (200-½)	
LNAV/VNAV DA		1204/40	347 (400-¾)	
LNAV MDA	1280-1	1320-1	1320-1½	1240/50 383(400-1)
CIRCLING	411 (500-1)	451 (500-1)	451 (500-1½)	1420-2 551 (600-2)

MIRL Rwy 13-31

HIRL Rwy 9-27

REIL Rwy 13

NC-3, 10 OCT 2019 to 07 NOV 2019

NC-3, 10 OCT 2019 to 07 NOV 2019