

# RNAV (GPS) RWY 9L

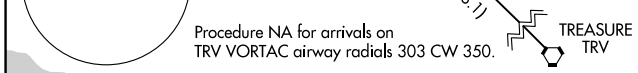
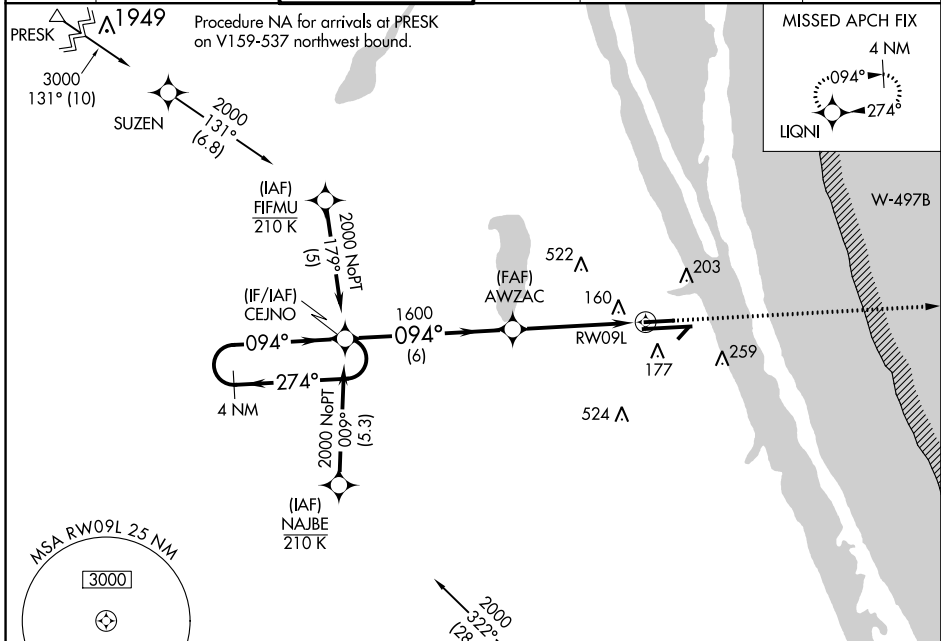
MELBOURNE INTL (MLB)

WAAS CH <b>65601</b> <b>W09A</b>	APP CRS <b>094°</b>	Rwy Idg TDZE <b>33</b> Apt Elev <b>33</b>	<b>6000</b>
--	------------------------	---	-------------

▼ For uncompensated Baro-VNAV systems, LNAV/VNAV NA below -15°C (5°F) or above 54°C (130°F). DME/DME RNP-0.3 NA. Helicopter visibility reduction below ¾ SM NA.

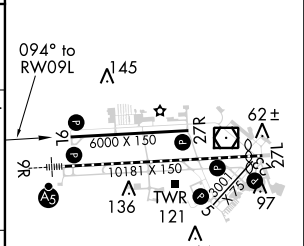
MISSED APPROACH: Climb to 2000 direct LIQNI and hold.

ATIS <b>132.55</b>	ORLANDO APP CON <b>132.65 281.425</b>	MELBOURNE TOWER * <b>118.2</b> (CTAF) <b>257.8</b>	GND CON <b>121.9</b>	CNLC DEL <b>121.9</b> (when twr closed)	UNICOM <b>122.95</b>
-----------------------	--	---	-------------------------	---	-------------------------



ELEV 33	TDZE 33
---------	---------

CATEGORY	A	B	C	D
LPV DA		283-¾	250 (300-¾)	
LNAV/VNAV DA		467-1¾	434 (500-1¾)	
LNAV MDA	420-1	387 (400-1)	420-1½	387 (400-1½)
CIRCLING	500-1 467 (500-1)	520-1 487 (500-1)	520-1½ 487 (500-1½)	620-2 587 (600-2)



REIL Rwy 27L	LIQNI
HIRL Rwy 9R-27L	AWZAC
MIRL Rwy 5-23 and 9L-27R	TREASURE TRV
TDZ/CL Rwy 9R	LIQNI

SE-3, 10 OCT 2019 to 07 NOV 2019

SE-3, 10 OCT 2019 to 07 NOV 2019