

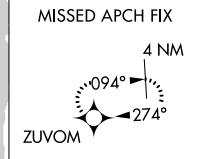
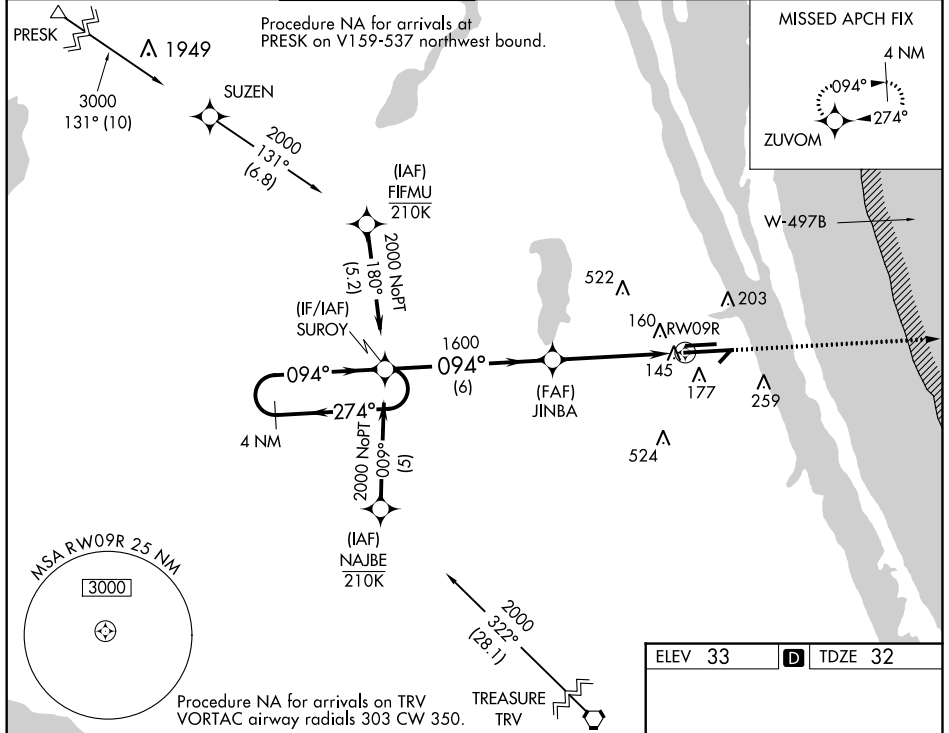
WAAS CH 60901 W09B	APP CRS 094°	Rwy Idg 10181 TDZE 32 Apt Elev 33
--	------------------------	--

RNAV (GPS) RWY 9R

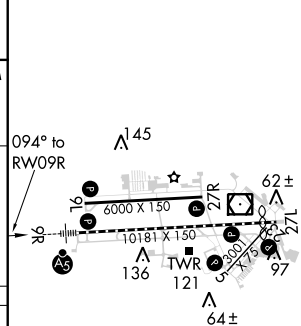
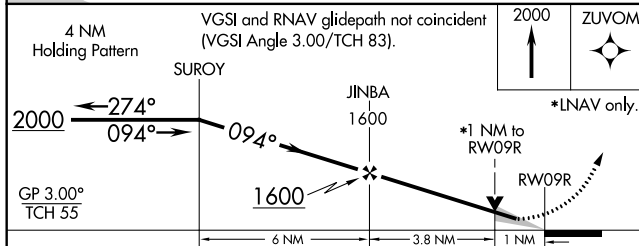
MELBOURNE INTL (MLB)

RNP APCH. ▼ For uncompensated Baro-VNAV systems, LNAV/VNAV NA below -15°C or above 54°C.		MALSR AS	MISSED APPROACH: Climb to 2000 direct ZUVOM and hold.
---	--	-------------	---

ATIS 132.55	ORLANDO APP CON 132.65 281.425	MELBOURNE TOWER ★ 118.2 (CTAF) 0 257.8	GND CON 121.9	CLNC DEL 121.9 (when twr closed)	UNICOM 122.95
-----------------------	--	--	-------------------------	---	-------------------------



ELEV 33	TDZE 32
---------	---------



CATEGORY	A	B	C	D
LPV DA	232/18		200 (200-½)	
LNAV/VNAV DA	427/40		395 (400-¾)	
LNAV MDA	420/24 388 (400-½)		420/35 388 (400-¾)	
CIRCLING	500-1 467 (500-1)	520-1 487 (500-1)	520-1½ 487 (500-1½)	620-2 587 (600-2)

- REIL Rwy 27L 0
- HIRL Rwy 9R-27L 0
- MIRL Rwy 5-23 and 9L-27R 0
- TDZ/CL Rwy 9R 0

SE-3, 10 OCT 2019 to 07 NOV 2019

SE-3, 10 OCT 2019 to 07 NOV 2019