

VOR/DME	MLB	APP CRS	Rwy Idg	<b>10181</b>
<b>110.0</b>		<b>089°</b>	TDZE	<b>32</b>
Chan <b>37</b>			Apt Elev	<b>33</b>

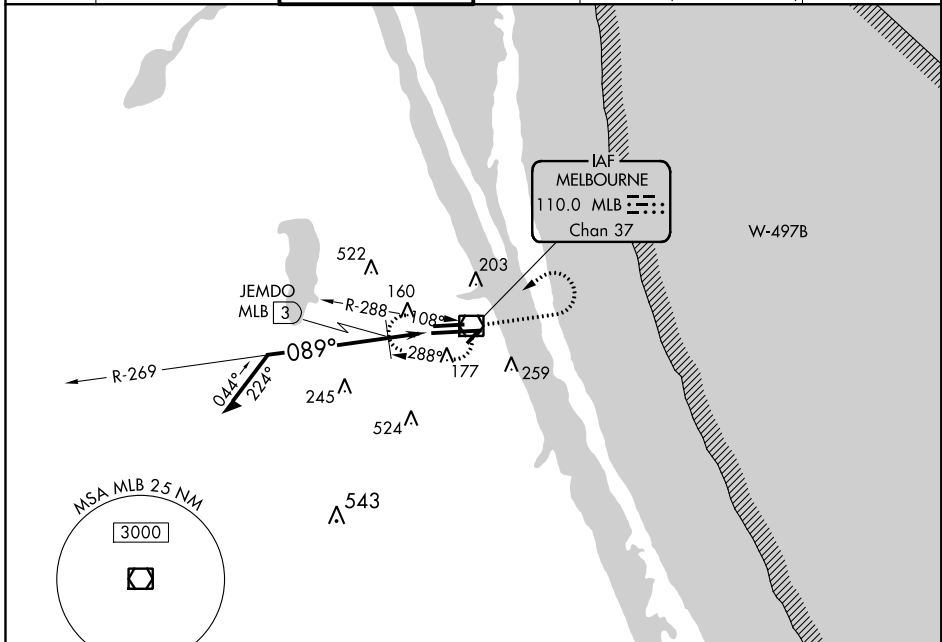
# VOR RWY 9R

MELBOURNE INTL (MLB)

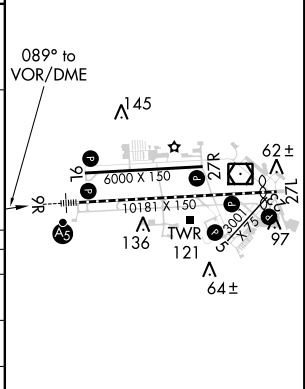
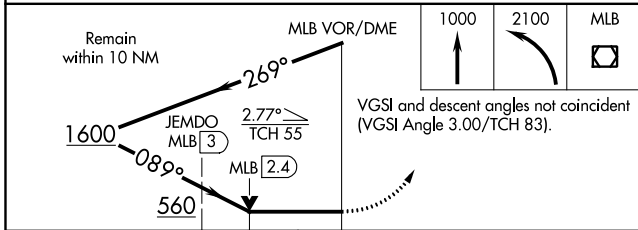
**▼ JEMDO FIX** minimums: For inop MALSRL, increase S-9R Cats C and D visibility to RVR 6000.

**MISSED APPROACH:** Climb to 1000, then climbing left turn to 2100 direct MLB VOR/DME and hold, continue climb-in-hold to 2100.

ATIS	ORLANDO APP CON	MELBOURNE TOWER ★	GND CON	CLNC DEL	UNICOM
<b>132.55</b>	<b>132.65 281.425</b>	<b>118.2 (CTAF) 257.8</b>	<b>121.9</b>	<b>121.9 132.65</b> (when twr closed)	<b>122.95</b>



ELEV	33	D	TDZE	32
------	----	---	------	----



CATEGORY	A	B	C	D
S-9R	560/24	528 (600-½)	560/55	528 (600-1)
CIRCLING	560-1	527 (600-1)	560-1½ 527 (600-1½)	620-2 587 (600-2)
JEMDO FIX MINIMUMS				
S-9R	440/24	408 (500-½)	440/40	408 (500-¾)
CIRCLING	500-1 467 (500-1)	520-1 487 (500-1)	520-1½ 487 (500-1½)	620-2 587 (600-2)

REIL Rwy 27L 0  
 HIRL Rwy 9R-27L 0  
 MIRL Rwy 5-23 and 9L-27R 0  
 TDZ/CL Rwy 9R

SE-3, 10 OCT 2019 to 07 NOV 2019

SE-3, 10 OCT 2019 to 07 NOV 2019