

(NARRATIVE ON FOLLOWING PAGE)

SE-3, 10 OCT 2019 to 07 NOV 2019

MIAMI APP CON
124.85 322.3
MIAMI INTL D-ATIS
119.15
HOMESTEAD ARB ATIS
132.275 269.9

DOLPHIN
113.9 DHP
Chan 86
N25°48.00'-W80°20.94'

MIAMI INTL
R-130 (14)

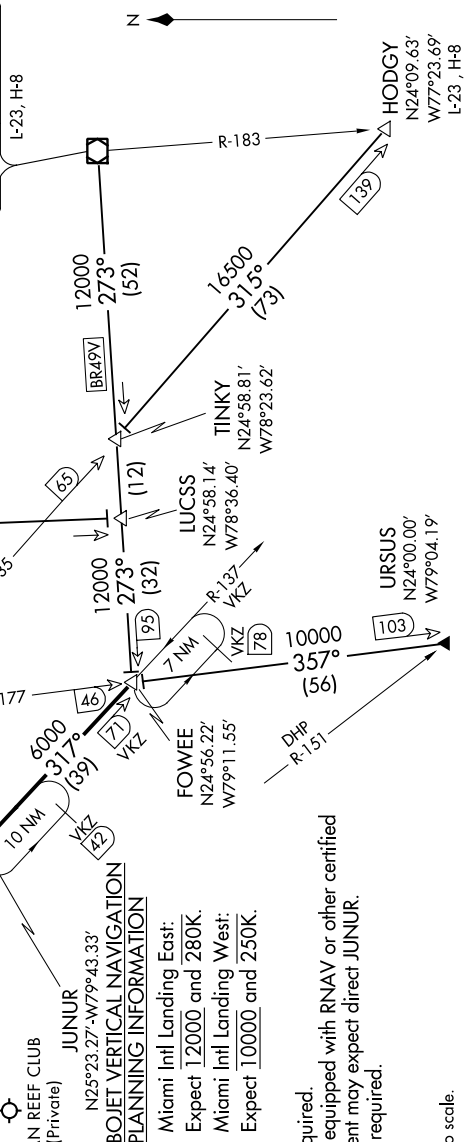
MIAMI EXECUTIVE
MIAMI HOMESTEAD GENERAL AVIATION
LUVLY
N25°39.74'
W80°08.33'

VIRGINIA KEY
117.1 VKZ
Chan 118

BIMINI
116.7 ZBV
Chan 114

FREEPORT
113.2 ZFP
Chan 79
N26°33.32'
W78°41.87'
L-23, H-8

NASSAU
112.7 ZDA
Chan 74
N25°01.53'-W77°26.79'
L-23, H-8



JUNIOR
N25°23.27'-W79°43.33'

TURBOJET VERTICAL NAVIGATION PLANNING INFORMATION

Miami Intl Landing East:
Expect 12000 and 280K.
Miami Intl Landing West:
Expect 10000 and 250K.

NOTE: DME required.
NOTE: Aircraft equipped with RNAV or other certified equipment may expect direct JUNIOR.
NOTE: RADAR required.

NOTE: Chart not to scale.

SE-3, 10 OCT 2019 to 07 NOV 2019