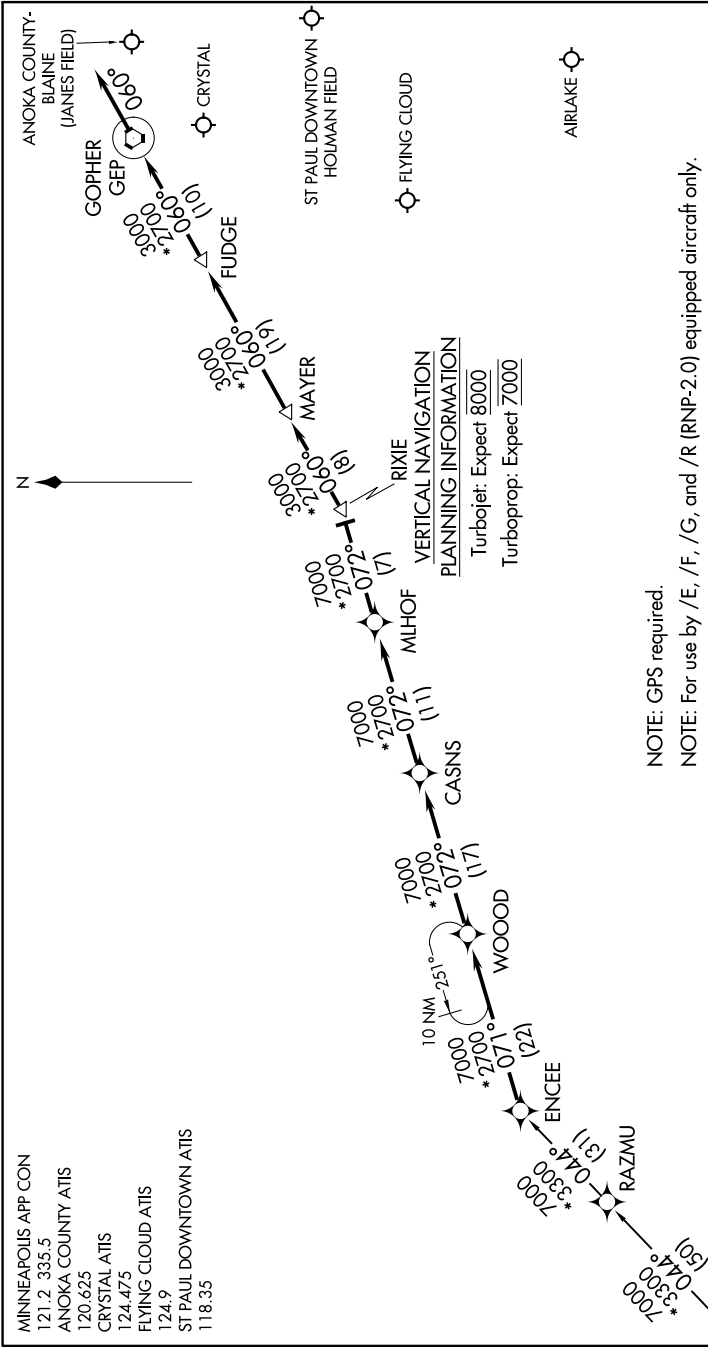


# ENCEE TWO ARRIVAL (RNAV)

AL-263 (FAA)

MINNEAPOLIS-ST PAUL, MINNESOTA

61.02 VON.Z 01 OCT 2019 to 07 NOV 2019



**ARRIVAL ROUTE DESCRIPTION**

SIoux FALLS TRANSITION (FSD.ENCEE2)

From over ENCEE as depicted to RIXIE, thence as depicted to GEP VORTAC. Thence heading 060°, expect RADAR vectors to final approach course.

NOTE: GPS required.  
NOTE: For use by /E, /F, /G, and /R (RNP-2.0) equipped aircraft only.

# ENCEE TWO ARRIVAL (RNAV)

MINNEAPOLIS-ST PAUL, MINNESOTA

NOTE: Chart not to scale.

NC-1, 10 OCT 2019 to 07 NOV 2019