

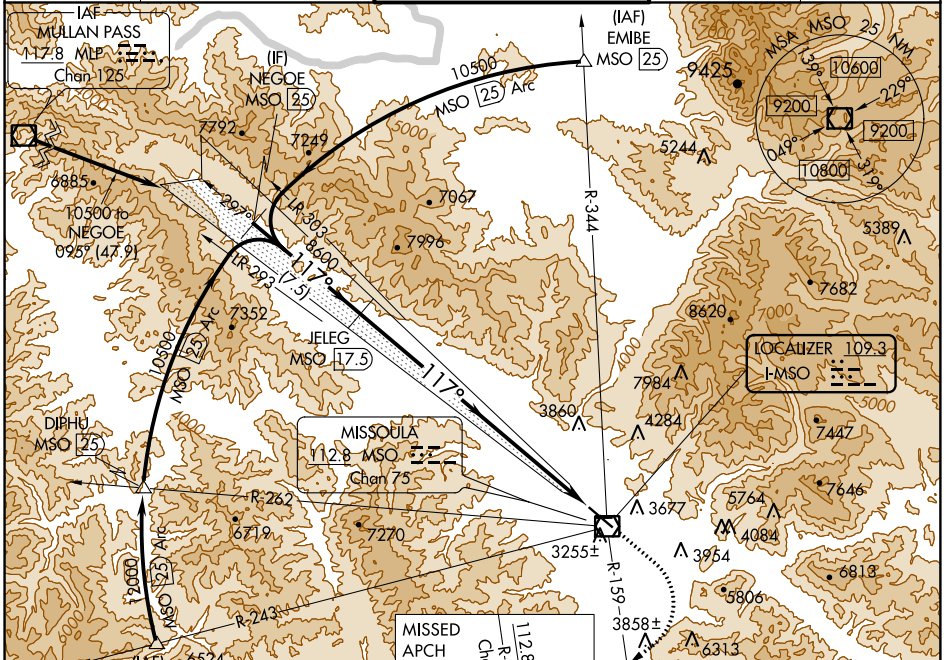
LOC I-MSO	APP CRS	Rwy Idg	9501
109.3	117°	TDZE	3200
		Apt Elev	3206

ILS Z RWY 12

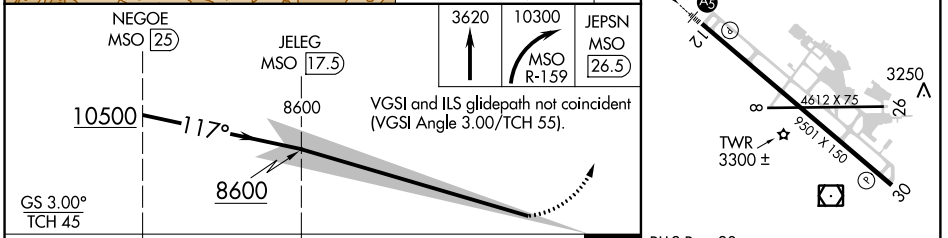
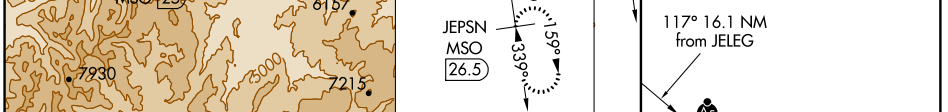
MISSOULA INTL (MISO)

DME required.		MALSR 	MISSED APPROACH: Climb to 3620 then dimbing right turn to 10300 on MSO VOR/DME R-159 to JEPSN/MSO 26.5 DME and hold. Missed approach requires minimum climb of 410 feet per NM to 9800; if unable to meet climb gradient, see ILS Y RWY 12.
-17°C			

ATIS 126.65	SPOKANE APP CON * 124.9 298.95	MISSOULA TOWER * 118.4 (CTAF) 377.175	GND CON 121.9	UNICOM 122.95
-----------------------	--	---	-------------------------	-------------------------



ELEV 3206		TDZE 3200
-----------	--	-----------



CATEGORY	A	B	C	D
S-ILS 12		3411/24	211 (300-1/2)	

NW-1, 10 OCT 2019 to 07 NOV 2019

NW-1, 10 OCT 2019 to 07 NOV 2019