

MZULA FIVE DEPARTURE

AL-266 (FAA)

MISSOULA INTL (MSO)
MISSOULA, MONTANA

**TOP ALTITUDE:
14000**

KALISPELL
113.2 FCA
Chan 79
N48°12.85'-W114°10.55'
L-13, H-1

MULLAN PASS
117.8 MLP
Chan 125
N47°27.41'-W115°38.76'
L-13, H-1

ATIS 126.65
GND CON 121.9
MISSOULA TOWER * 121.9
SPOKANE DEP CON 118.4 377.175
SALT LAKE CITY CENTER 124.9 298.95
133.4 285.4

TAKEOFF MINIMUMS
Rwy 12: Standard with minimum climb of 340' per NM to 7800.

NOTE: DME required.

NOTE: Chart not to scale.

DEPARTURE ROUTE DESCRIPTION

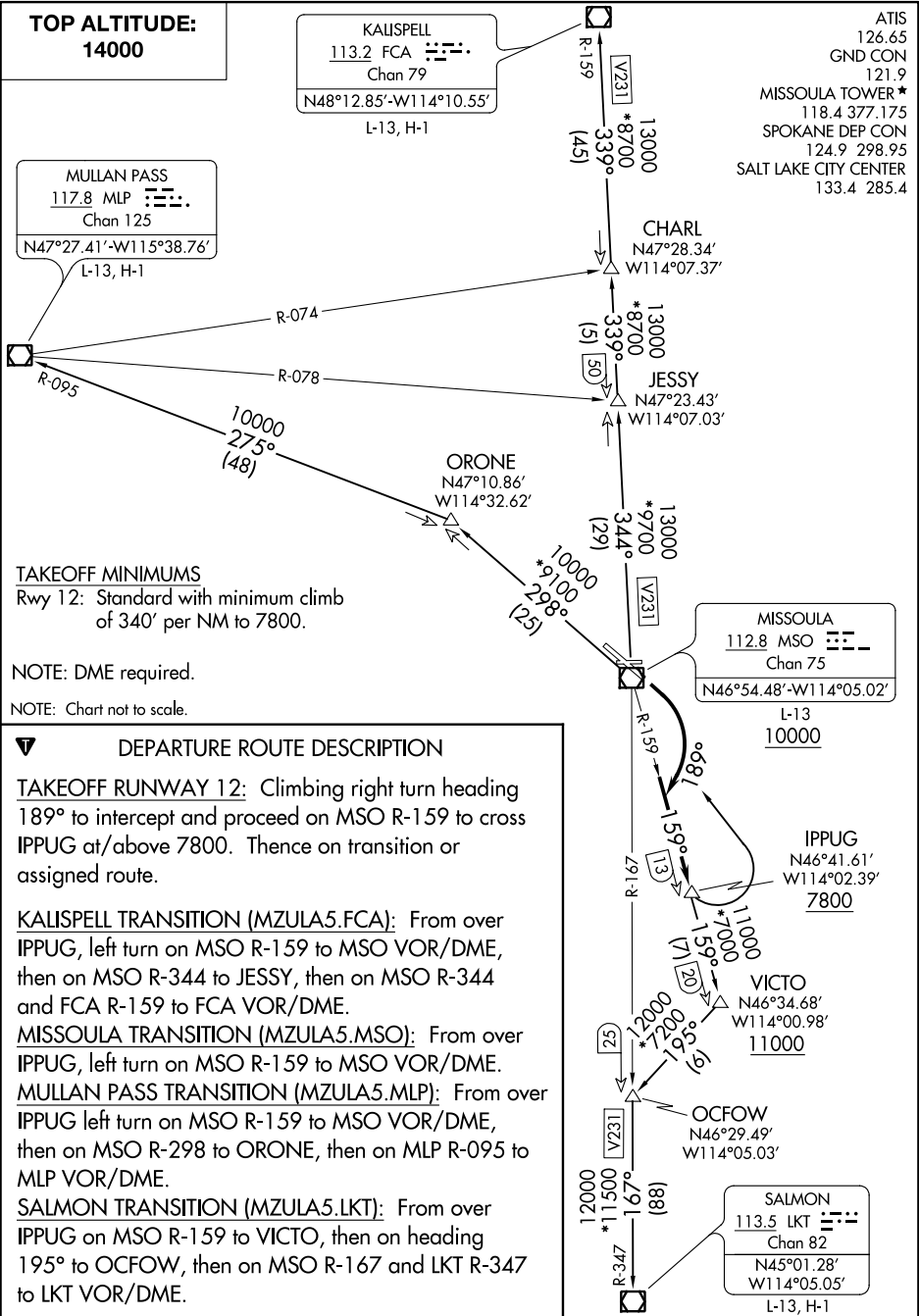
TAKEOFF RUNWAY 12: Climbing right turn heading 189° to intercept and proceed on MSO R-159 to cross IPPUG at/above 7800. Thence on transition or assigned route.

KALISPELL TRANSITION (MZULA5.FCA): From over IPPUG, left turn on MSO R-159 to MSO VOR/DME, then on MSO R-344 to JESSY, then on MSO R-344 and FCA R-159 to FCA VOR/DME.

MISSOULA TRANSITION (MZULA5.MSO): From over IPPUG, left turn on MSO R-159 to MSO VOR/DME.

MULLAN PASS TRANSITION (MZULA5.MLP): From over IPPUG left turn on MSO R-159 to MSO VOR/DME, then on MSO R-298 to ORONE, then on MLP R-095 to MLP VOR/DME.

SALMON TRANSITION (MZULA5.LKT): From over IPPUG on MSO R-159 to VICTO, then on heading 195° to OCFOW, then on MSO R-167 and LKT R-347 to LKT VOR/DME.



NW-1, 10 OCT 2019 to 07 NOV 2019

NW-1, 10 OCT 2019 to 07 NOV 2019

MZULA FIVE DEPARTURE

(MZULA5.IPPUG) 24MAY18

MISSOULA, MONTANA
MISSOULA INTL (MSO)