

APP CRS 339°	Rwy Idg TDZE Apt Elev	N/A N/A 3206
------------------------	-----------------------------	-----------------------------------------

RNAV (GPS)-D

MISSOULA INTL (MISO)

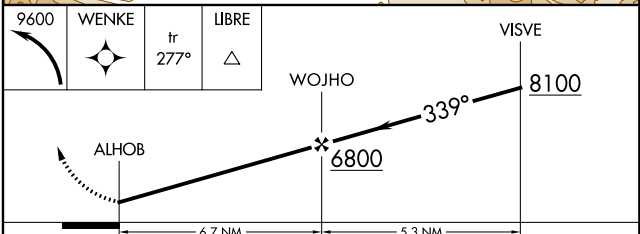
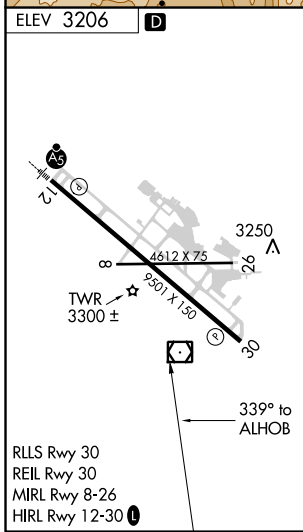
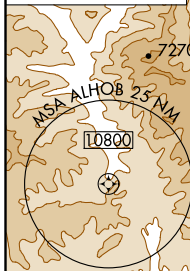
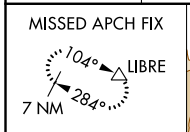
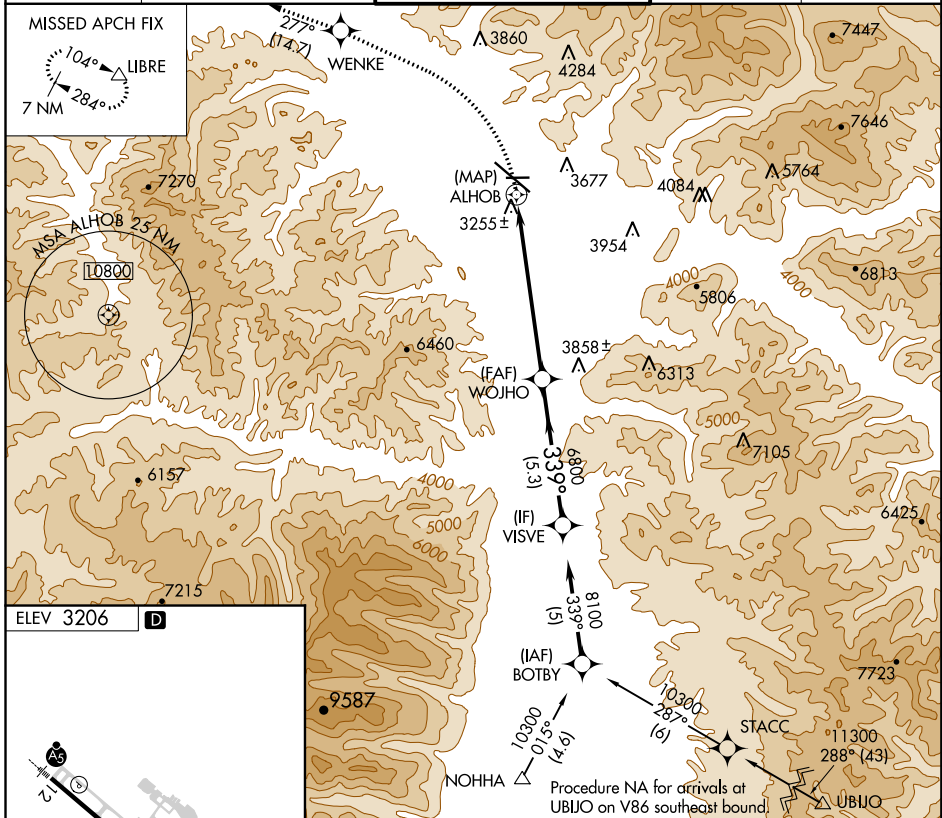
RNP Apch.

A Circling NA for Cats C and D northeast of Rwy 12-30.

S -17°C

MISSED APPROACH: Climbing left turn to 9600 direct WENKE and on track 277° to LIBRE and hold, continue climb-in-hold to 9600.

ATIS 126.65	SPOKANE APP CON * 124.9 298.95	MISSOULA TOWER * 118.4 (CTAF) 377.175	GND CON 121.9	UNICOM 122.95
-----------------------	------------------------------------------	-------------------------------------------------	-------------------------	-------------------------



CATEGORY	A	B	C	D
C CIRCLING	4280-1¼ 1074 (1100-1¼)	4700-1½ 1494 (1500-1½)	4700-3 1494 (1500-3)	5140-3 1934 (2000-3)

NW-1, 10 OCT 2019 to 07 NOV 2019

NW-1, 10 OCT 2019 to 07 NOV 2019