

APP CRS 298°	Rwy Idg 9501
	TDZE 3206
	Apt Elev 3206

RNAV (RNP) RWY 30

MISSOULA INTL (MISO)

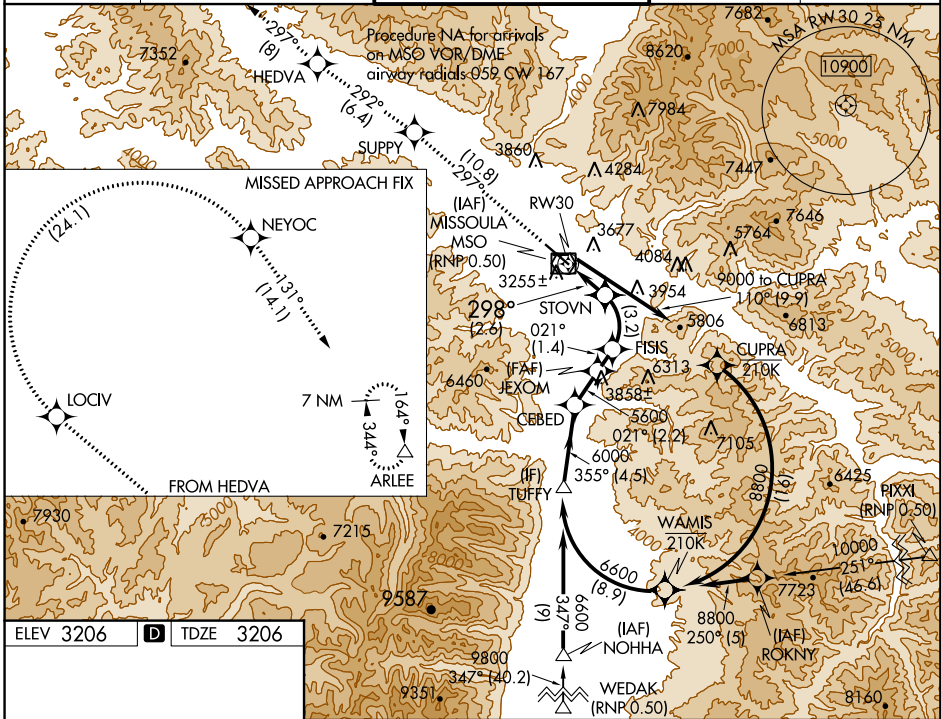
RNP AR APCH, RF required.

V For uncompensated Baro-VNAV systems, procedure NA below -21°C (-5°F) or above 43°C (109°F). When local altimeter setting not received, procedure NA.

A -17°C

MISSED APPROACH: Climb to 11000 on track 297° to SUPPY and on track 292° to HEDVA and on track 297° to LOCV, then right turn to NEYOC and on track 131° to ARLEE and hold. *Missed approach requires minimum climb of 215 feet per NM to 5000.

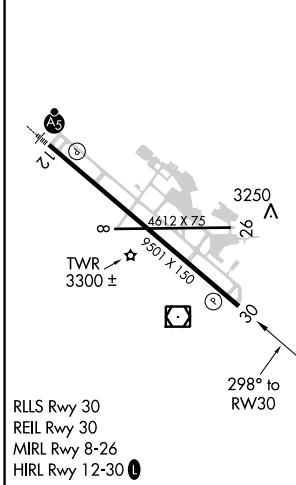
ATIS 126.65	SPOKANE APP CON * 124.9 298.95	MISSOULA TOWER * 118.4 (CTAF) 377.175	GND CON 121.9	UNICOM 122.95
-----------------------	--	---	-------------------------	-------------------------



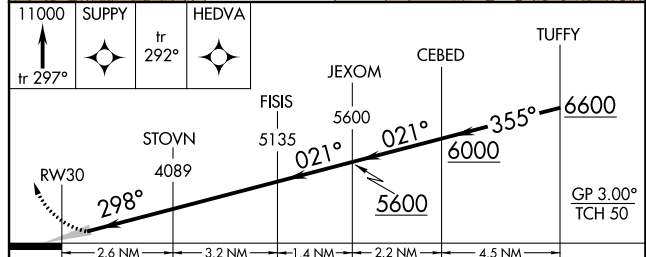
NW-1, 10 OCT 2019 to 07 NOV 2019

NW-1, 10 OCT 2019 to 07 NOV 2019

ELEV 3206	D	TDZE 3206
-----------	----------	-----------



RLS Rwy 30
REIL Rwy 30
MIRL Rwy 8-26
HIRL Rwy 12-30



CATEGORY	A	B	C	D
RNP 0.30 DA *	3524-1 318 (400-1)			
RNP 0.30 DA	3582-1¼ 376 (400-1¼)			

AUTHORIZATION REQUIRED