

# RNAV (RNP) Z RWY 12

MISSOULA INTL (MISO)

APP CRS	Rwy Idg	<b>9501</b>
<b>117°</b>	TDZE	<b>3200</b>
	Apt Elev	<b>3206</b>

RNP AR apch.

**⚠** For uncompensated Baro-VNAV systems, LNAV/VNAV NA below -21° C (-6°F) or above 43°C (109°F).

**⚠** For inop ALS, increase RNP 0.12 all Cats visibility to RVR 6000. For inop ALS, increase RNP 0.30 all Cats visibility to 2½ SM. When local weather not received, procedure NA.

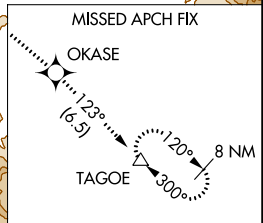
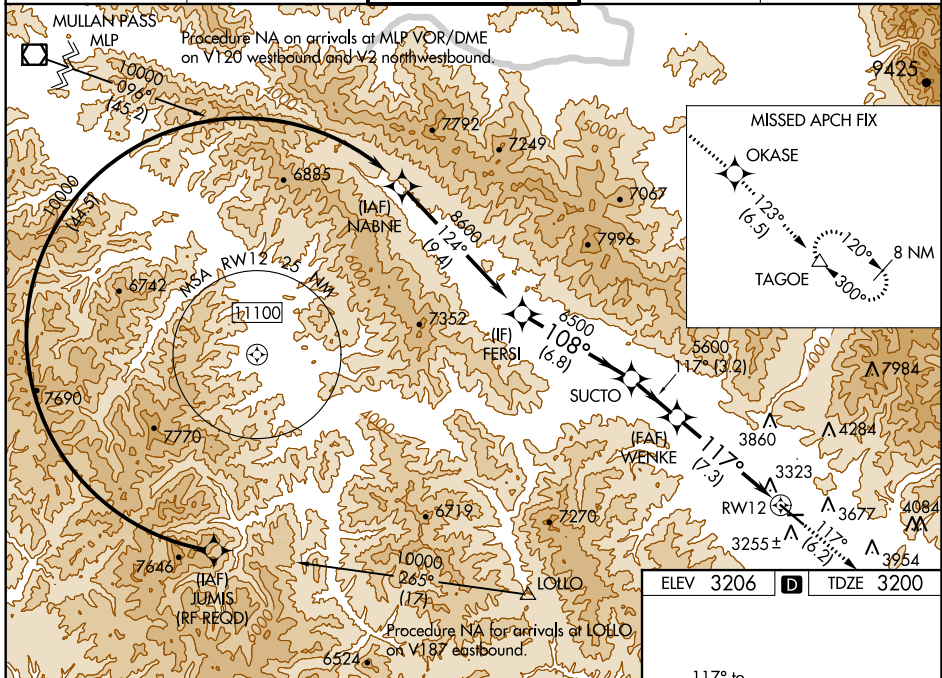
**MALS**

**MISSED APPROACH:** Climb to 13000 on track 117° to OKASE and on track 123° to TAGOE and hold, continue climb-in-hold to 13000.

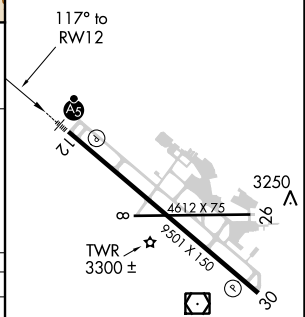
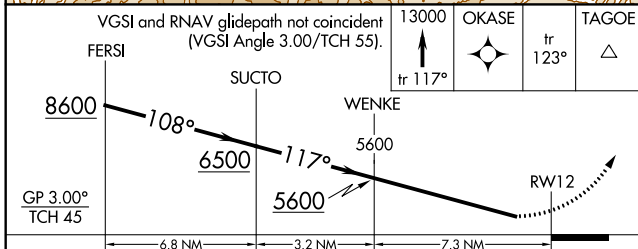
\*Missed approach requires minimum climb of 350 feet per NM to 8300; if unable to meet climb gradient, see RNAV (GPS) Y RWY 12.

#Missed approach requires minimum climb of 425 feet per NM to 8300.

<b>ATIS</b> <b>126.65</b>	<b>SPOKANE APP CON *</b> <b>124.9 298.95</b>	<b>MISSOULA TOWER *</b> <b>118.4 (CTAF) 0 377.175</b>	<b>GND CON</b> <b>121.9</b>	<b>UNICOM</b> <b>122.95</b>
------------------------------	---	--	--------------------------------	--------------------------------



ELEV 3206	<b>D</b>	TDZE 3200
-----------	----------	-----------



CATEGORY	A	B	C	D
RNP 0.12 DA#	3518/40		318 (400-¾)	
RNP 0.30 DA*	3880-2		680 (700-2)	

## AUTHORIZATION REQUIRED

RLS Rwy 30  
REIL Rwy 30  
MIRL Rwy 8-26  
HIRL Rwy 12-30

NW-1, 10 OCT 2019 to 07 NOV 2019

NW-1, 10 OCT 2019 to 07 NOV 2019