

WAAS CH 65715 W12B	APP CRS 117°	Rwy Idg TDZE Apt Elev	9501 3200 3206
--	------------------------	-----------------------------	---

RNAV (GPS) Y RWY 12

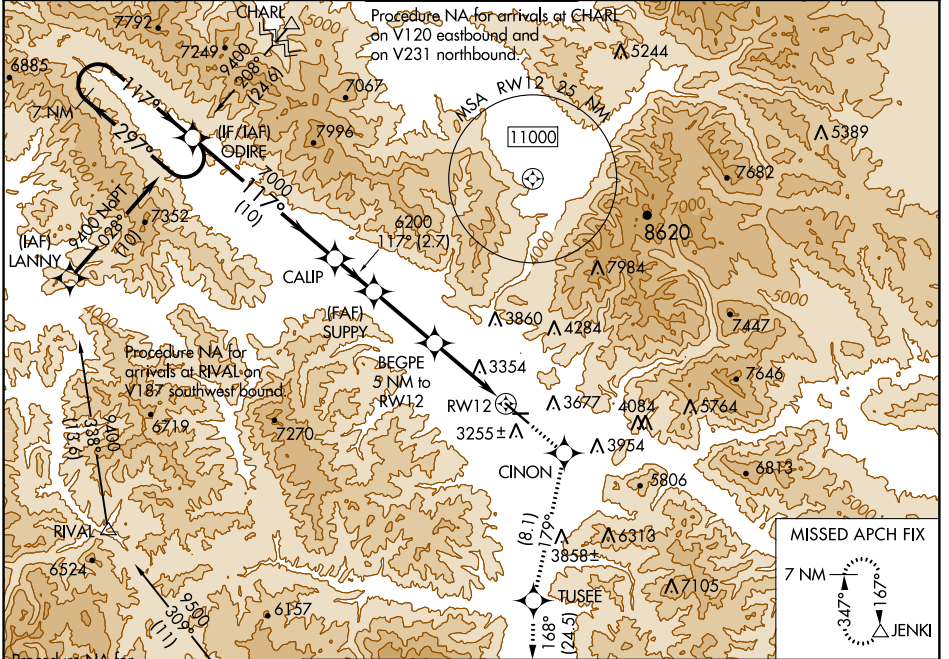
MISSOULA INTL (MISO)

RNP apch.

MAISLR MISSED APPROACH: (Do not exceed 200K until CINON) Climb to 12000 direct CINON and on track 179° to TUSEE and on track 168° to JENKI and hold, continue climb-in-hold to 12000. ## Missed approach requires minimum climb of 325 feet per NM to 7700.

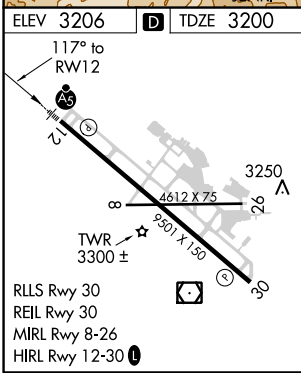
CAUTION Circling NA for Cats C and D northeast of Rwy 12-30. Inop table does not apply to LNAV # Cats C/D. Inop table does not apply to LPV† all Cats. ## RVR 1800 authorized with use of FD or AP or HUD to DA.

ATIS 126.65	SPOKANE APP CON* 124.9 298.95	MISSOULA TOWER* 118.4 (CTAF) 377.175	GND CON 121.9	UNICOM 122.95
-----------------------	---	--	-------------------------	-------------------------



NW-1, 10 OCT 2019 to 07 NOV 2019

NW-1, 10 OCT 2019 to 07 NOV 2019



ELEV 3206	D	TDZE 3200	7 NM Holding Pattern	ODIRE	↑ 12000	CINON	tr 179°	TUSEE	tr 168°	JENKI
			GP 3.00° TCH 55	9400 ← 297°	CALIP	SUPPLY	BEGPE 5 NM to RW12	*1.2 NM to RW12		
			10 NM	2.7 NM	4.3 NM	3.8 NM	1.2 NM	*LNAV only		
CATEGORY	A		B		C		D			
LPV DA ##			3400/24		200 (200-½)					
LPV DA †			4229-4		1029 (1100-4)					
LNAV MDA ##	3640/24		440 (500-½)		3640/40		440 (500-¾)			
LNAV MDA #	4520/40 1320 (1400-¾)		4520/55 1320 (1400-1)		4520-3		1320 (1400-3)			
CIRCLING	4520-1¼ 1314 (1400-1¼)		4700-1½ 1494 (1500-1½)		4700-3 1494 (1500-3)		5140-3 1934 (2000-3)			