

WAAS CH <b>56428</b> <b>W32A</b>	APP CRS <b>317°</b>	Rwy Idg <b>4999</b> TDZE <b>78</b> Apt Elev <b>79</b>
--	------------------------	---

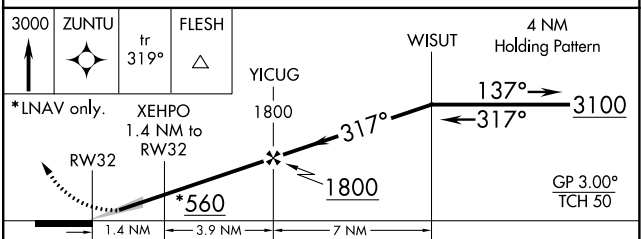
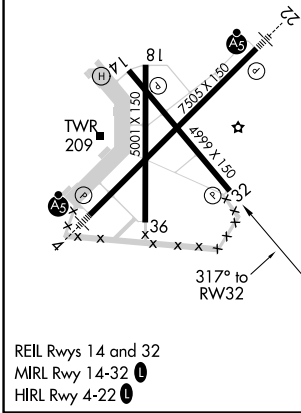
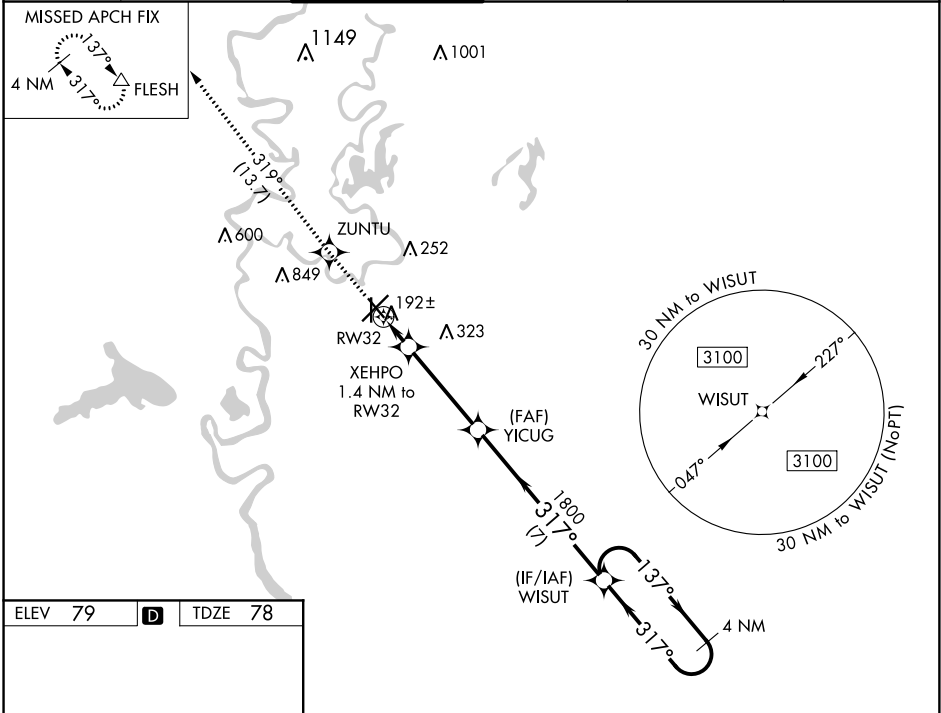
# RNAV (GPS) RWY 32

MONROE RGNL (MLU)

RNP APCH.  
ASR For uncompensated Baro-VNAV systems, LNAV/VNAV NA below -15°C or above 43°C. Circling Rwy 14 NA at night.

MISSED APPROACH: Climb to 3000 direct ZUNTU on track 319° to FLESH and hold.

ATIS <b>125.05</b>	MONROE APP CON * <b>118.15 290.475</b>	MONROE TOWER * <b>118.9 (CTAF) 257.8</b>	GND CON <b>121.9</b>	CLNC DEL <b>121.65</b>	UNICOM <b>122.95</b>
-----------------------	---	---	-------------------------	---------------------------	-------------------------



CATEGORY	A	B	C	D
LPV DA		328-1	250 (300-1)	
LNAV/VNAV DA		356-1	278 (300-1)	
LNAV MDA	460-1	382 (400-1)	460-1½ 382 (400-1½)	
CIRCLING	580-1	501 (600-1)	620-1½ 541 (600-1½)	640-2 561 (600-2)

SC-4, 10 OCT 2019 to 07 NOV 2019

SC-4, 10 OCT 2019 to 07 NOV 2019