

VORTAC MLU <b>117.2</b> Chan <b>119</b>	APP CRS <b>236°</b>	Rwy Idg <b>7505</b> TDZE <b>78</b> Apt Elev <b>79</b>
---	------------------------	---

# VOR/DME RWY 22

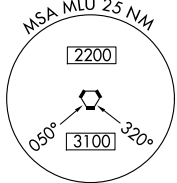
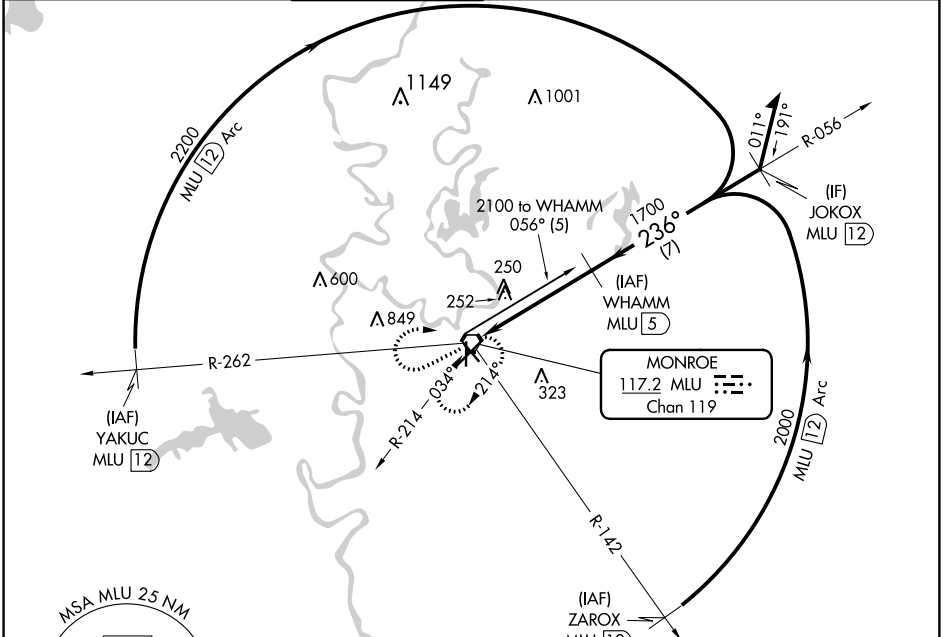
MONROE RGNL (MLU)

For inop MALS, increase S-22 Cats A and B visibility to 1 mile.  
Rwy 22 helicopter visibility reduction below 3/4 SM NA.  
ASR Circling Rwy 14 NA at night.

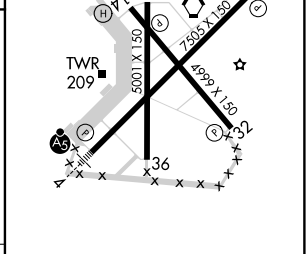
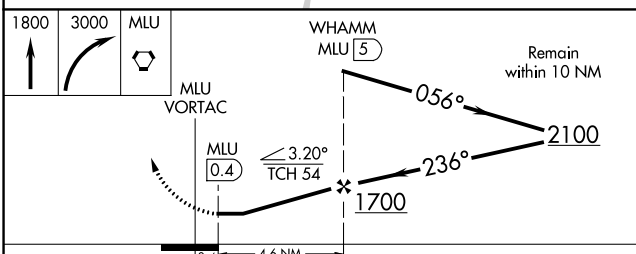


MISSED APPROACH: Climb to 1800 then climbing right turn to 3000 direct MLU VORTAC and hold.

ATIS <b>125.05</b>	MONROE APP CON ★ <b>118.15 290.475</b>	MONROE TOWER ★ <b>118.9 (CTAF) 0 257.8</b>	GND CON <b>121.9</b>	CLNC DEL <b>121.65</b>	UNICOM <b>122.95</b>
-----------------------	---	---	-------------------------	---------------------------	-------------------------



ELEV 79	D	TDZE 78
---------	---	---------



CATEGORY	A	B	C	D
S-22	560-3/4 482 (500-3/4)		560-1 482 (500-1)	
CIRCLING	580-1 501 (600-1)		620-1 1/2 541 (600-1 1/2)	640-2 561 (600-2)

REIL Rwy 14 and 32  
MIRL Rwy 14-32  
HIRL Rwy 4-22

SC-4, 10 OCT 2019 to 07 NOV 2019

SC-4, 10 OCT 2019 to 07 NOV 2019