

LOC/DME I-GDI 108.5 Chan 22	APP CRS 134°	Rwy Idg TDZE 12 Apt Elev 21	7003
---	------------------------	---	-------------

COPTER ILS or LOC RWY 13

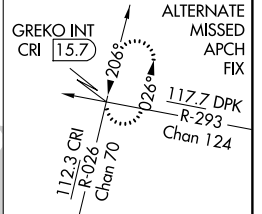
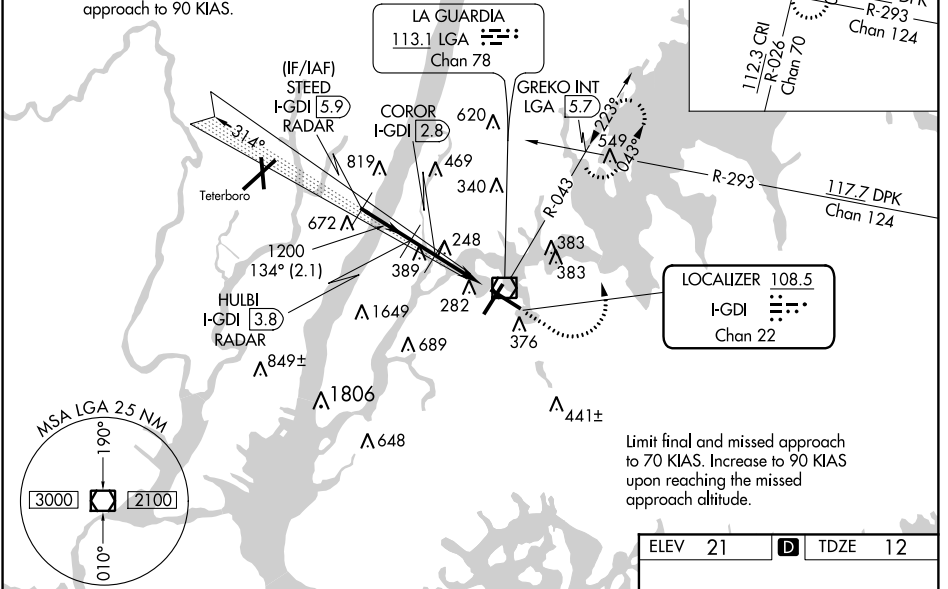
LAGUARDIA (LGA)

DME or RADAR required.	MALS	MISSED APPROACH: Climb to 800 then climbing left turn to 2000 via LGA VOR/DME R-043 to GREKO INT/ LGA 5.7 DME and hold.
------------------------	------	---

D-ATIS ARR 125.95 D-ATIS DEP 127.05	NEW YORK APP CON 120.8 263.0	LAGUARDIA TOWER 118.7 263.0	GND CON 121.7 263.0	CLNC DEL 135.2 121.875 (COPTER)	CPDLC
--	--	---------------------------------------	-------------------------------	---	-------

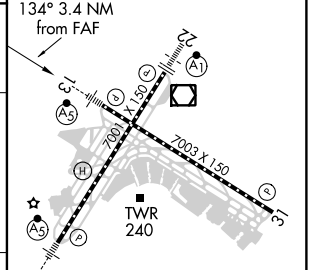
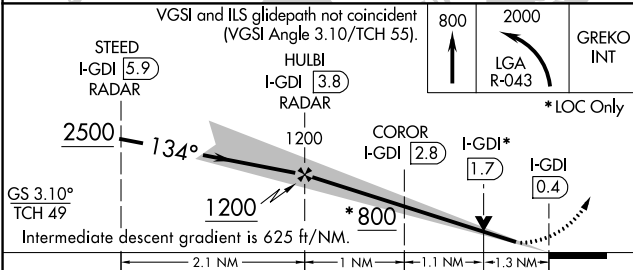
RADAR REQUIRED

Limit intermediate approach to 90 KIAS.



Limit final and missed approach to 70 KIAS. Increase to 90 KIAS upon reaching the missed approach altitude.

ELEV 21	D	TDZE 12
----------------	----------	----------------



CATEGORY	COPTER	B	C	D
H-ILS 13	212/12 200 (200-¼)		NA	
H-LOC 13	800/12 788 (800-¼)		NA	
COROR FIX MINIMUMS				
H-LOC 13	500/12 488 (500-¼)		NA	

TDZ/CL Rws 4, 13 and 22 HIRL Rws 4-22 and 13-31 REIL Rws 22 and 31					
FAF to MAP 3.4 NM					
Knots	45	60	75	90	105
Min:Sec	4:32	3:24	2:43	2:16	1:57

NE-2, 10 OCT 2019 to 07 NOV 2019

NE-2, 10 OCT 2019 to 07 NOV 2019