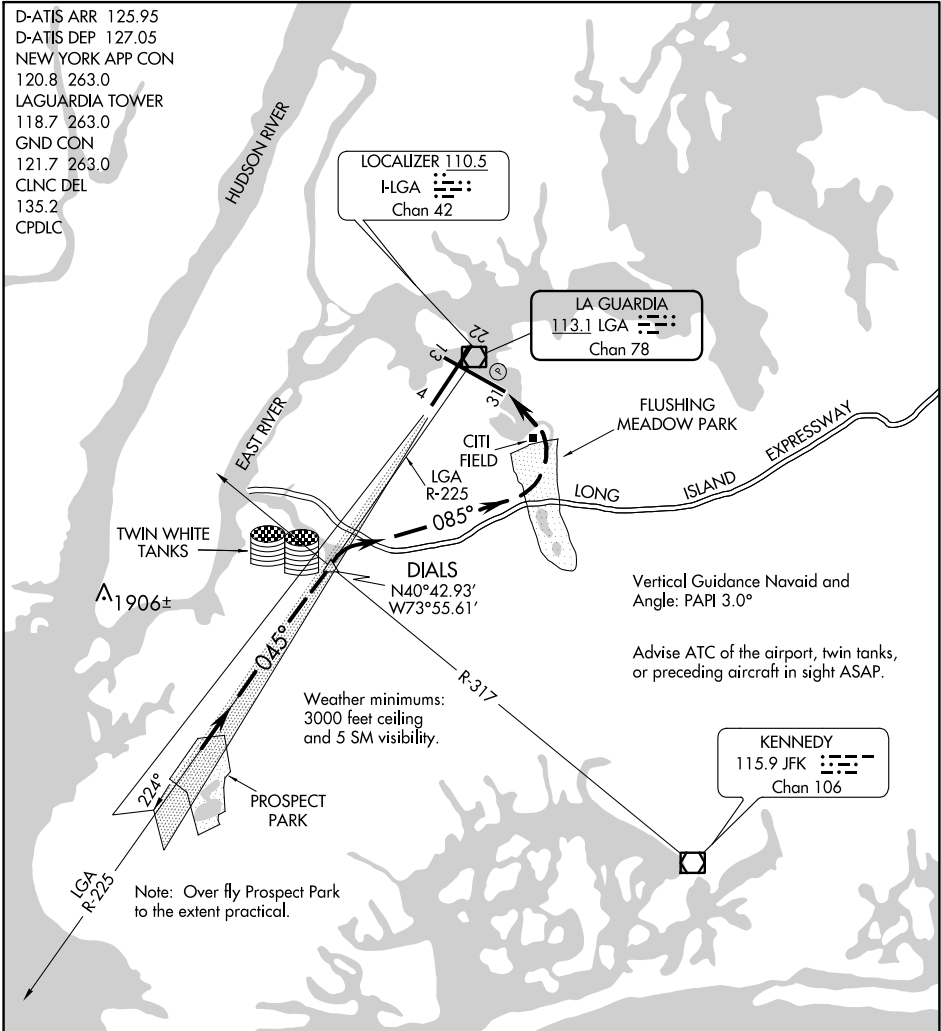


D-ATIS ARR 125.95
 D-ATIS DEP 127.05
 NEW YORK APP CON
 120.8 263.0
 LAGUARDIA TOWER
 118.7 263.0
 GND CON
 121.7 263.0
 CLNC DEL
 135.2
 CPDLC

NE-2, 10 OCT 2019 to 07 NOV 2019

NE-2, 10 OCT 2019 to 07 NOV 2019



Vertical Guidance Navaid and Angle: PAPI 3.0°
 Advise ATC of the airport, twin tanks, or preceding aircraft in sight ASAP.

Weather minima:
 3000 feet ceiling
 and 5 SM visibility.

Note: Over fly Prospect Park to the extent practical.

1	2	3	4	5	6	7	8	9	10	11	12	13	14	15	16
---	---	---	---	---	---	---	---	---	----	----	----	----	----	----	----

EXPRESSWAY VISUAL RWY 31

When cleared for an Expressway Approach to Rwy 31 (while on LGA VOR/DME R-225) cross DIALS INT at 2500 feet or above. Turn right at DIALS INT heading 085° and descend to Runway 31 via Long Island Expressway and Flushing Meadow Park. Use LGA Rwy 4 localizer for course guidance when LGA VOR is not available.