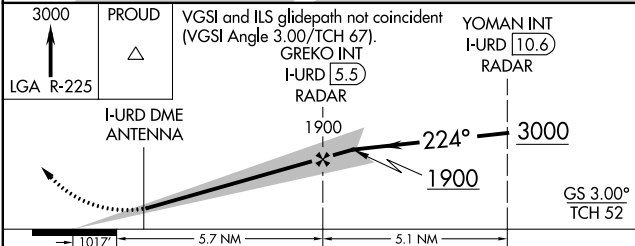
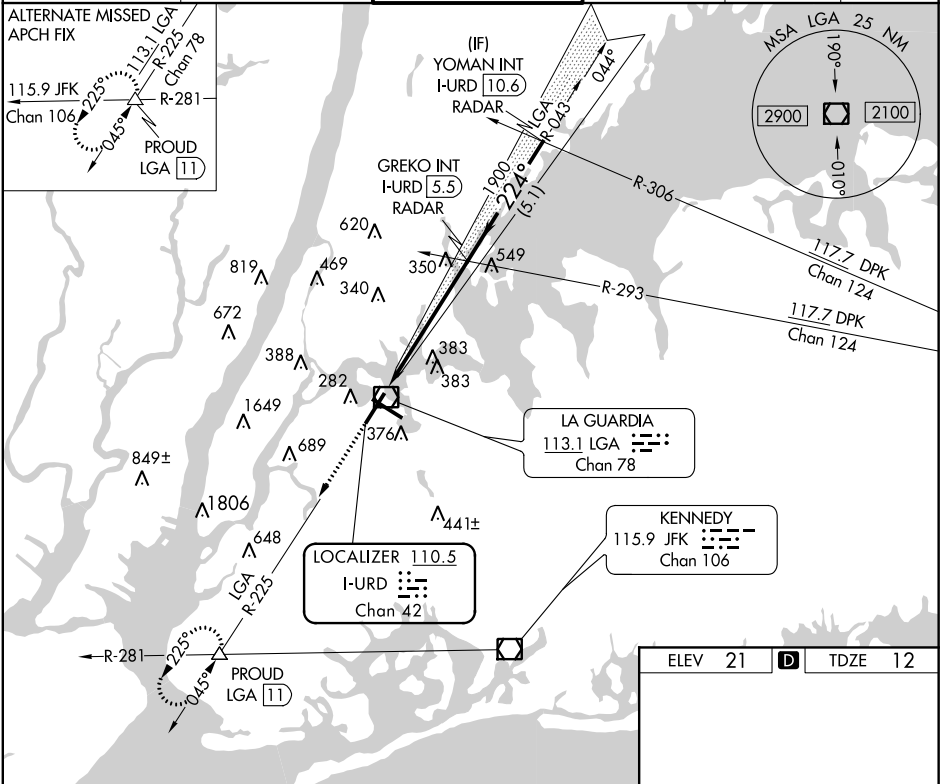


LOC/DME I-URD 110.5 Chan 42	APP CRS 224°	Rwy Idg TDZE 12 Apt Elev 21	7001
---	------------------------	---	-------------

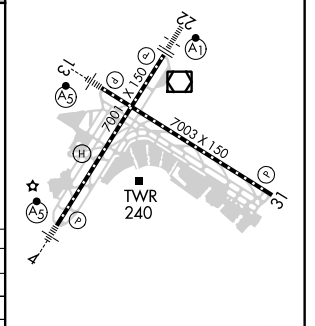
ILS RWY 22 (SA CAT I & II) LAGUARDIA (LGA)

RADAR required for procedure entry.		ALSF-1 	MISSED APPROACH: Climb to 3000 on LGA VOR/DME R-225 to PROUD INT/LGA11 DME and hold, continue climb-in-hold to 3000.	
<p>▽ SA CAT I: Requires specific OPSPEC, MSPEC or LOA approval and use of HUD to DH. SA CAT II: Reduced lighting: Requires specific OPSPEC, MSPEC, or LOA approval and use of autoland or HUD to touchdown.</p>				

D-ATIS ARR 125.95	NEW YORK APP CON	LAGUARDIA TOWER	GND CON	CLNC DEL	CPDLC
D-ATIS DEP 127.05	120.8 263.0	118.7 263.0	121.7 263.0	135.2	



CATEGORY	A	B	C	D
S-ILS 22	SA CAT I RA 162/14 150 DA 162			
S-ILS 22	SA CAT II RA 112/12 100 DA 112			



SA CATEGORY I & II ILS - SPECIAL AIRCREW & AIRCRAFT CERTIFICATION REQUIRED

TDZ/CL Rws 4, 13 and 22
HIRL Rws 4-22 and 13-31
REIL Rws 22, and 31

NE-2, 10 OCT 2019 to 07 NOV 2019

NE-2, 10 OCT 2019 to 07 NOV 2019