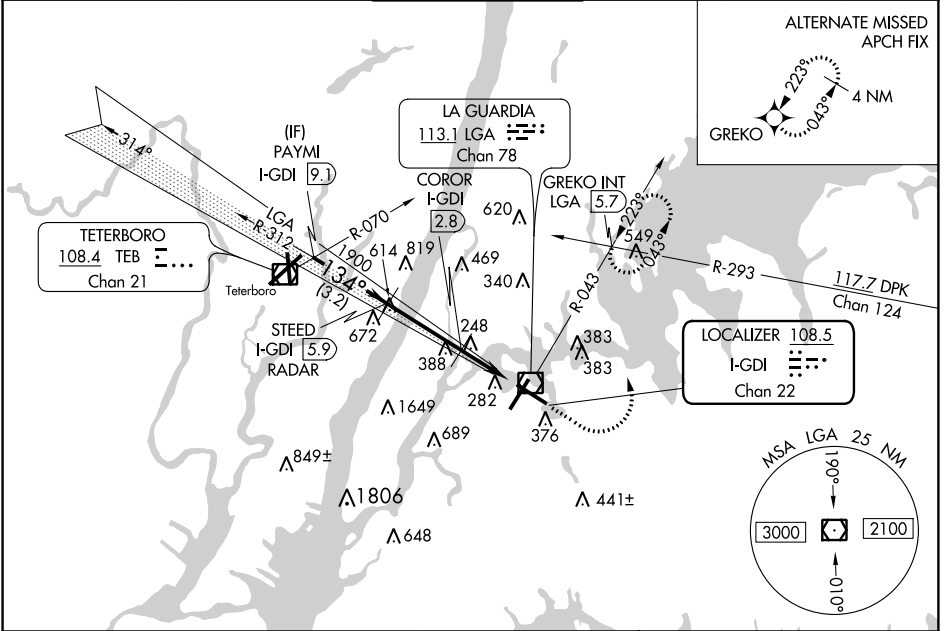


LOC/DME I-GDI 108.5 Chan 22	APP CRS 134°	Rwy Idg TDZE 12 Apt Elev 21	7003
---	------------------------	---	-------------

ILS or LOC RWY 13

LAGUARDIA (L.G.A)

Radar required for procedure entry. DME or RADAR required for LOC only.		MALSR	MISSED APPROACH: Climb to 800 then climbing left turn o 2000 via LGA VOR/DME R-043 to GREKO INT/LGA 5.7 DME and hold.	
For inop ALS, increase S-LOC 13 Cats C/D visibility to 2½ SM.				
D-ATIS ARR 125.95 D-ATIS DEP 127.05	NEW YORK APP CON 120.8 263.0	LAGUARDIA TOWER 118.7 263.0	GND CON 121.7 263.0	CLNC DEL 135.2
				CPDLC



NE-2, 10 OCT 2019 to 07 NOV 2019

NE-2, 10 OCT 2019 to 07 NOV 2019

VGSi and ILS glidepath not coincident (VGSi Angle 3.10/TCH 55).		ELEV 21	TDZE 12
# 2800 GS 3.10° TCH 49 # 1900 when assigned by ATC # 800 * LOC only.		134° 5.5 NM from FAF TWR 240 TDZ/CL Rws 4, 13 and 22 HIRL Rws 4-22 and 13-31 REIL Rws 22 and 31	
CATEGORY	A	B	C
S-ILS 13	212/18		
S-LOC 13	800/24 788 (800-½)	800/40 788 (800-¾)	800-1¼ 788 (800-1¼)
CIRCLING	800-1 779 (800-1)	800-1¼ 779 (800-1¼)	1080-3 1059 (1100-3)
COROR FIX MINIMUMS			
S-LOC 13	500/24 488 (500-½)	500/50 488 (500-1)	
CIRCLING	700-1 679 (700-1)	1080-3 1059 (1100-3)	
FAF to MAP 5.5 NM			
Knots	60	90	120 150 180
Min:Sec	5:30	3:40	2:45 2:12 1:50