

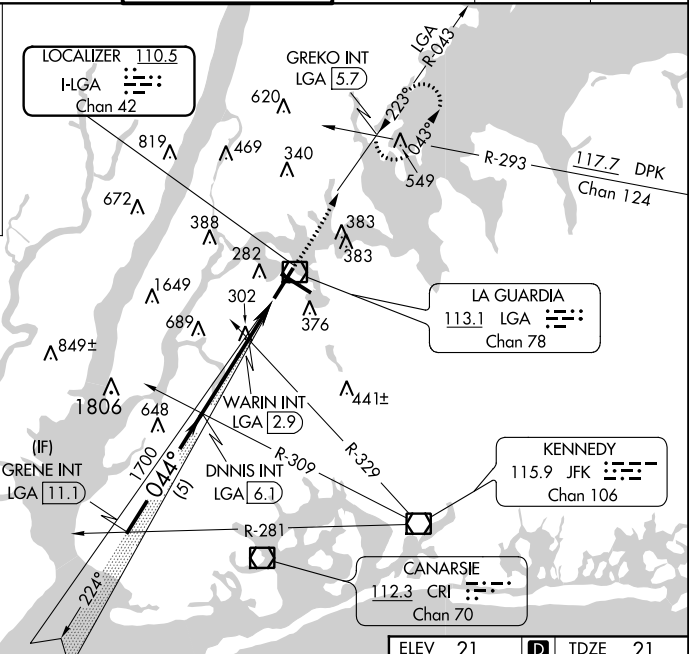
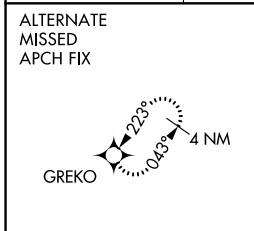
LOC/DME I-LGA	APP CRS	Rwy Idg	7001
110.5	044°	TDZE	21
Chan 42		Apt Elev	21

ILS or LOC RWY 4

LAGUARDIA (LGA)

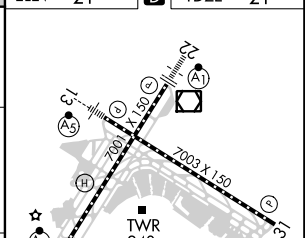
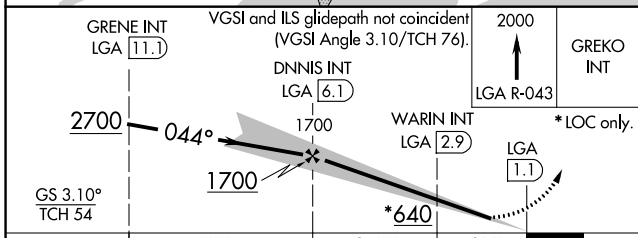
Radar required for procedure entry.		MALSR 	MISSED APPROACH: Climb to 2000 on LGA VOR/DME R-043 to GREKO INT/LGA 5.7 DME and hold.
⚠ Rwy 4 helicopter visibility reduction below RVR 5000 NA. Inop table does not apply to S-ILS 4 all Cats, S-LOC 4 Cats A/B and WARIN fix minimums Cats A/B. DME from LGA VOR/DME. Autopilot couple approach NA.			

D-ATIS ARR 125.95	NEW YORK APP CON	LAGUARDIA TOWER	GND CON	CLNC DEL	CPDLC
D-ATIS DEP 127.05	120.8 263.0	118.7 263.0	121.7 263.0	135.2	



NE-2, 10 OCT 2019 to 07 NOV 2019

NE-2, 10 OCT 2019 to 07 NOV 2019



CATEGORY	A	B	C	D
S-ILS 4	305/50 284 (300-1)			
S-LOC 4	640/50	619 (700-1)	640-1 $\frac{3}{8}$	619 (700-1 $\frac{3}{8}$)
C CIRCLING	700-1	679 (700-1)	1080-3	1059 (1100-3)
WARIN FIX MINIMUMS (DUAL VOR RECEIVERS OR DME REQUIRED)				
S-LOC 4	560/50	539 (600-1)	560/55	539 (600-1)
C CIRCLING	700-1	679 (700-1)	1080-3	1059 (1100-3)

ELEV	21	TDZE	21
TDZ/CL Rws 4, 13 and 22 HIRL Rws 4-22 and 13-31 REIL Rws 22 and 31			
FAF to MAP 4.9 NM			
Knots	60	90	120 150 180
Min:Sec	4:54	3:16	2:27 1:58 1:38