

LOC/DME I-PZV <b>108.5</b> Chan <b>22</b>	APP CRS <b>316°</b>	Rwy Idg TDZE Apt Elev	<b>7003</b> <b>7</b> <b>21</b>
---	------------------------	-----------------------------	--------------------------------------

# LOC RWY 31

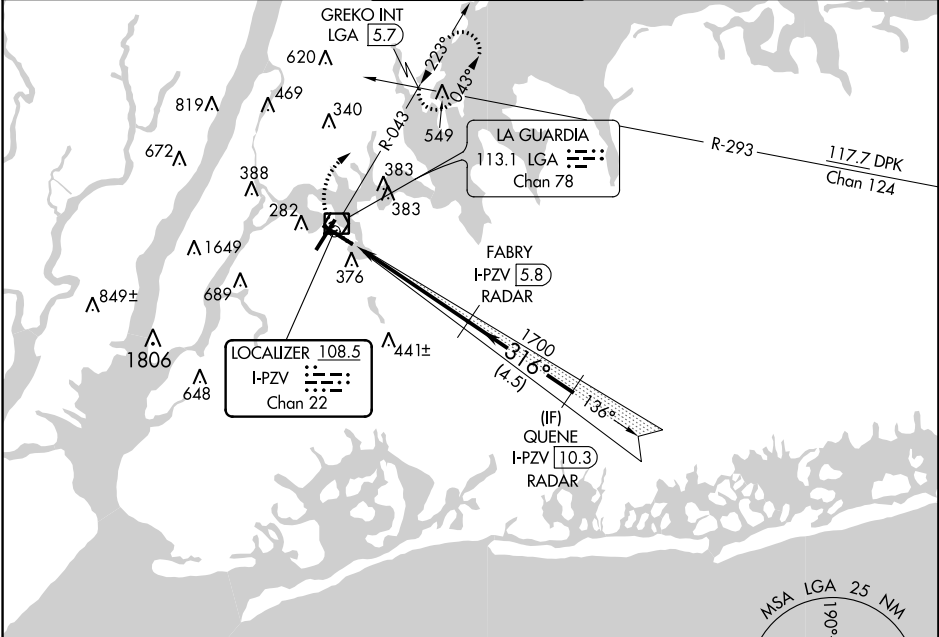
LAGUARDIA (L.G.A)

RADAR required for procedure entry. DME required.

**Rwy 31 helicopter visibility reduction below RVR 4000 NA.**

MISSED APPROACH: Climbing right turn to 2000 on LGA VOR/DME R-043 to GREKO INT/LGA 5.7 DME and hold.

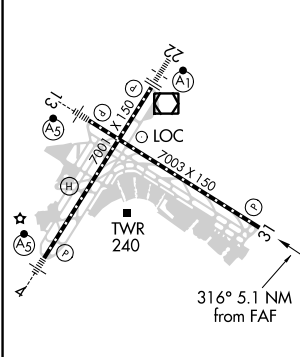
D-ATIS ARR <b>125.95</b> D-ATIS DEP <b>127.05</b>	NEW YORK APP CON <b>120.8 263.0</b>	LAGUARDIA TOWER <b>118.7 263.0</b>	GND CON <b>121.7 263.0</b>	CLNC DEL <b>135.2</b>	CPDLC
--	--	---------------------------------------	-------------------------------	--------------------------	-------



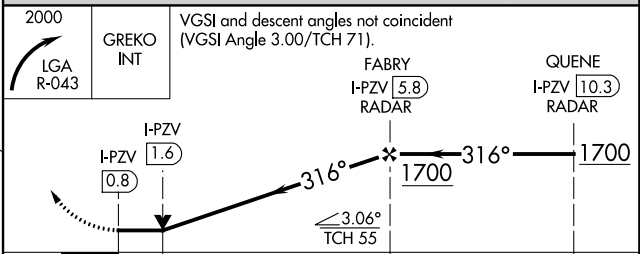
NE-2, 10 OCT 2019 to 07 NOV 2019

NE-2, 10 OCT 2019 to 07 NOV 2019

ELEV 21	<b>D</b>	TDZE 7
---------	----------	--------



TDZ/CL Rwy 4, 13 and 22  
HIRL Rwy 4-22 and 13-31  
REIL Rwy 22 and 31



CATEGORY	A	B	C	D
S-31	600/55	593 (600-1)	600-1¾	593 (600-1¾)
<b>C</b> CIRCLING	700-1	679 (700-1)	1080-3	1059 (1100-3)