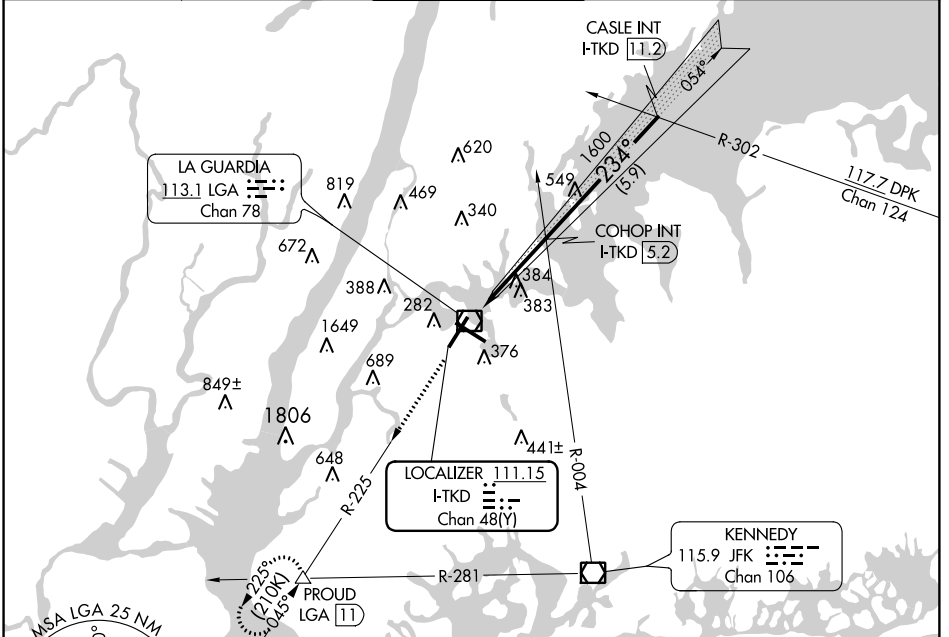


LOC/DME I-TKD 111.15 Chan 48 (Y)	APP CRS 234°	Rwy Idg TDZE Apt Elev	N/A N/A 21
---	------------------------	--------------------------	---------------------------------------

LDA-A

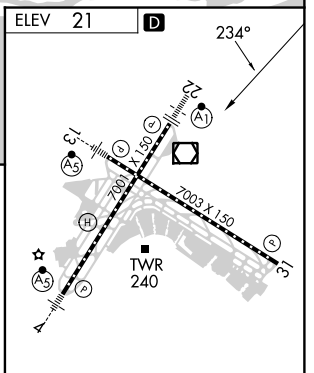
LAGUARDIA (LGA)

RADAR required for procedure entry.		MISSED APPROACH: Climb to 3000 on LGA VOR/DME R-225 to PROUD INT and hold.			
▼ ▲ Auto pilot coupled approach NA.					
D-ATIS ARR 125.95 D-ATIS DEP 127.05	NEW YORK APP CON 120.8 263.0	LAGUARDIA TOWER 118.7 263.0	GND CON 121.7 263.0	CLNC DEL 135.2	CPDLC



NE-2, 10 OCT 2019 to 07 NOV 2019

NE-2, 10 OCT 2019 to 07 NOV 2019



3000	LGA R-225	PROUD
CASLE INT I-TKD 11.2		
COHOP INT I-TKD 5.2		
I-TKD 2		
3000		
1600		
234°		
0.8 3.2 NM 5.9 NM		

CATEGORY	A	B	C	D	FAF to MAP 3.2 NM					
◻ CIRCLING	700-1	679 (700-1)	1080-3	1059 (1100-3)	Knots	60	90	120	150	180
					Min:Sec	3:12	2:08	1:36	1:17	1:04