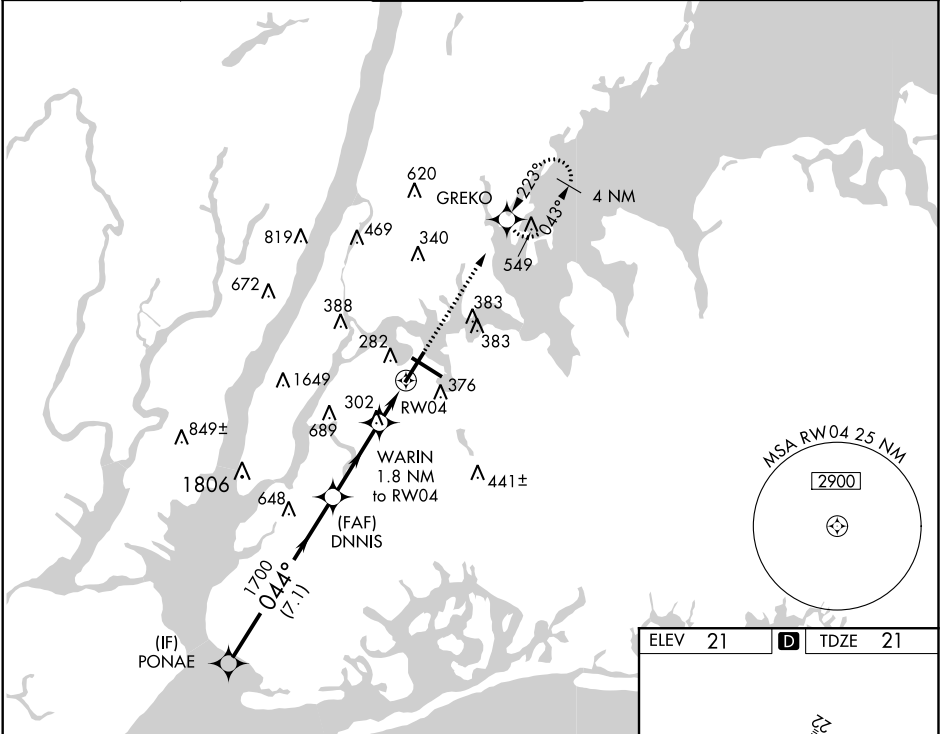


WAAS CH 60918 W04A	APP CRS 044°	Rwy Idg TDZE 21 Apt Elev 21	7001
--	------------------------	---	-------------

RNAV (GPS) Y RWY 4

LAGUARDIA (LGA)

RNP APCH.		MALSR		MISSED APPROACH: Climb to 2000 direct GREKO and hold.	
<p>▼ Inop table does not apply to LPV all Cats and LNAV Cats A and B. For uncompensated Baro-VNAV systems, LNAV/VNAV NA below -11°C (13°F) or above 47°C (118°F). Rwy 4 helicopter visibility reduction below RVR 5000 NA.</p>					
D-ATIS ARR 125.95	NEW YORK APP CON	LAGUARDIA TOWER	GND CON	CLNC DEL	CPDLC
D-ATIS DEP 127.05	120.8 263.0	118.7 263.0	121.7 263.0	135.2	



NE-2, 10 OCT 2019 to 07 NOV 2019

NE-2, 10 OCT 2019 to 07 NOV 2019

PONA E		VGSi and RNAV glidepath not coincident (VGSi Angle 3.10/TCH 76).		2000	GREKO
3000		DNNIS		↑	☉
GP 3.10° TCH 54		1700			
044°		WARIN 1.8 NM to RW04		* LNAV only.	
1700		RW04		* 640	
7.1 NM		3.1 NM		1.8 NM	
CATEGORY	A	B	C	D	
LPV DA	271/50		250 (300-1)		
LNAV/VNAV DA	488/55		467 (500-1)		
LNAV MDA	560/50	539 (600-1)	560/55	539 (600-1)	
CIRCLING	700-1	679 (700-1)	1080-3	1059 (1100-3)	

