

WAAS CH 48928 W31A	APP CRS 314°	Rwy Idg TDZE Apt Elev	7003 7 21
--	------------------------	-----------------------------	--------------------------------------

RNAV (GPS) Z RWY 31

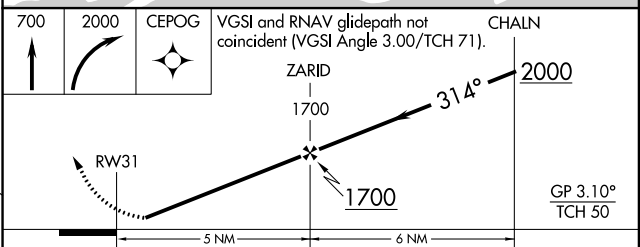
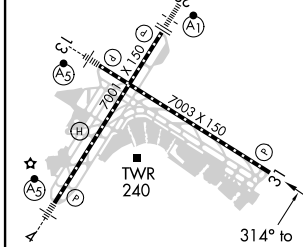
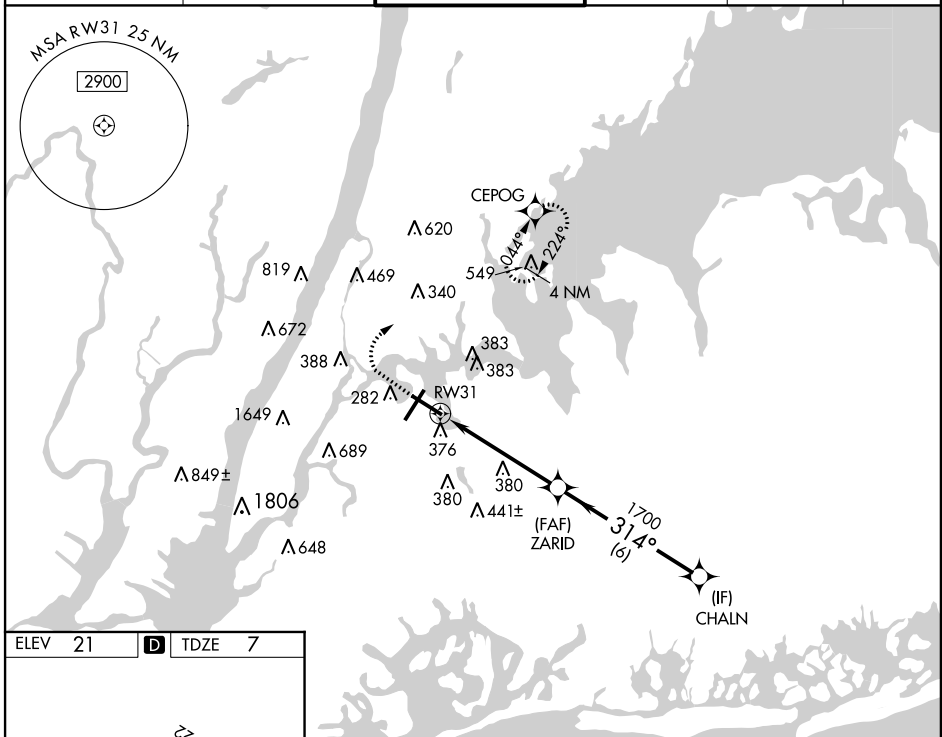
LAGUARDIA (LGA)

RNP APCH.

▼ Helicopter visibility reduction below 1 SM NA. For uncompensated Baro-VNAV systems, LNAV/VNAV NA below -12°C or above 48°C. Circling NA for Cat D northwest of Rwy 4 and southwest of Rwy 13.

MISSED APPROACH: (Do not exceed 220K until CEPOG) Climb to 700 then climbing right turn to 2000 direct CEPOG and hold.

D-ATIS ARR 125.95	NEW YORK APP CON 120.8 263.0	LAGUARDIA TOWER 118.7 263.0	GND CON 121.7 263.0	CLNC DEL 135.2	CPDLC
D-ATIS DEP 127.05					



CATEGORY	A	B	C	D
LPV DA		330/50	323 (400-1)	
LNAV/VNAV DA		618-1¼	611 (600-1¼)	
LNAV MDA	640/55	633 (700-1)	640-1¼	633 (700-1¼)
C CIRCLING	680-1	659 (700-1)	1080-3	1059 (1100-3)

NEW YORK, NEW YORK
Amdt 1F 28FEB19

40°47'N -73°52'W

RNAV (GPS) Z RWY 31

LAGUARDIA (LGA)

NE-2, 10 OCT 2019 to 07 NOV 2019

NE-2, 10 OCT 2019 to 07 NOV 2019