

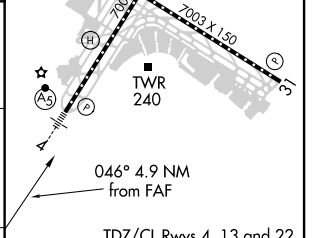
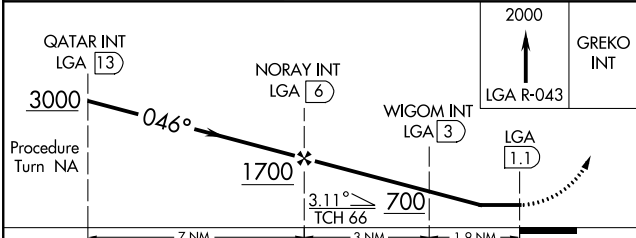
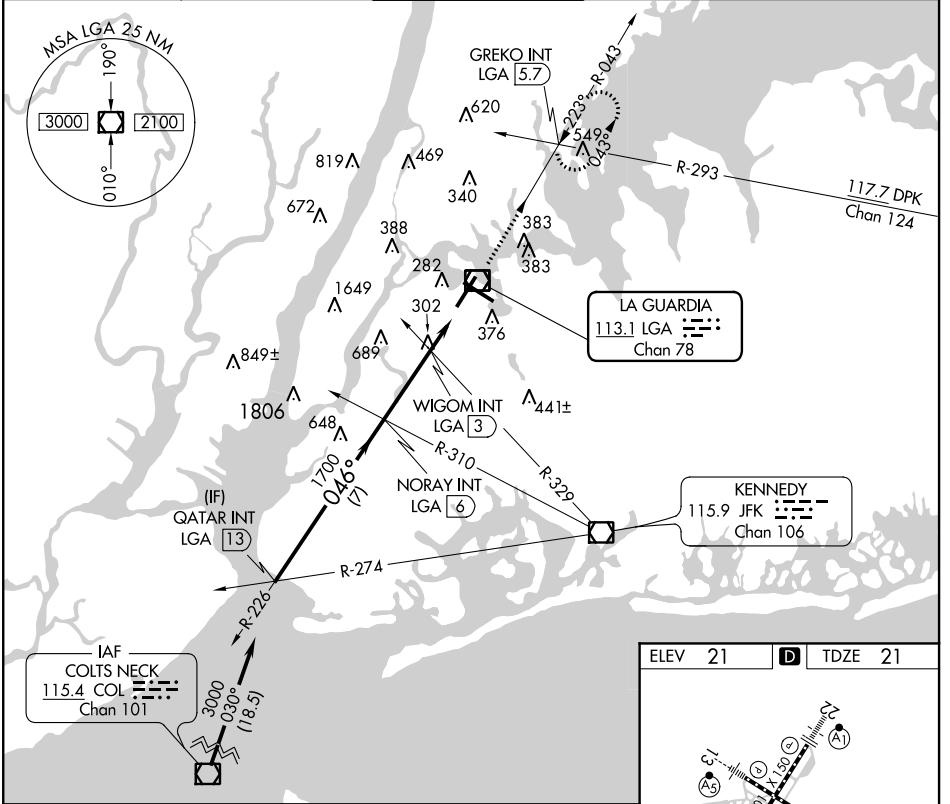
VOR/DME LGA	APP CRS	Rwy Idg	<b>7001</b>
<b>113.1</b>	<b>046°</b>	TDZE	<b>21</b>
Chan <b>78</b>		Apt Elev	<b>21</b>

# VOR RWY 4

LAGUARDIA (L.G.A.)

<p><b>▼</b> Inoperative table does not apply to Cats A and B.</p> <p><b>▲</b> Rwy 4 helicopter visibility reduction below RVR 5000 NA.</p>	<p>MALS</p>	MISSED APPROACH: Climb to 2000 via LGA VOR/DME R-043 to GREKO INT/LGA 5.7 DME and hold.

D-ATIS ARR <b>125.95</b>	NEW YORK APP CON	LAGUARDIA TOWER	GND CON	CLNC DEL	CPDLC
D-ATIS DEP <b>127.05</b>	<b>120.8 263.0</b>	<b>118.7 263.0</b>	<b>121.7 263.0</b>	<b>135.2</b>	



CATEGORY	A	B	C	D
S-4	560/50 539 (600-1)			560/60 539 (600-1 1/4)
<b>C</b> CIRCLING	700-1	679 (700-1)	1080-3	1059 (1100-3)

FAF to MAP 4.9 NM					
Knots	60	90	120	150	180
Min:Sec	4:54	3:16	2:27	1:58	1:38

NE-2, 10 OCT 2019 to 07 NOV 2019

NE-2, 10 OCT 2019 to 07 NOV 2019