

BANND TWO ARRIVAL (RNAV) Arrival Routes

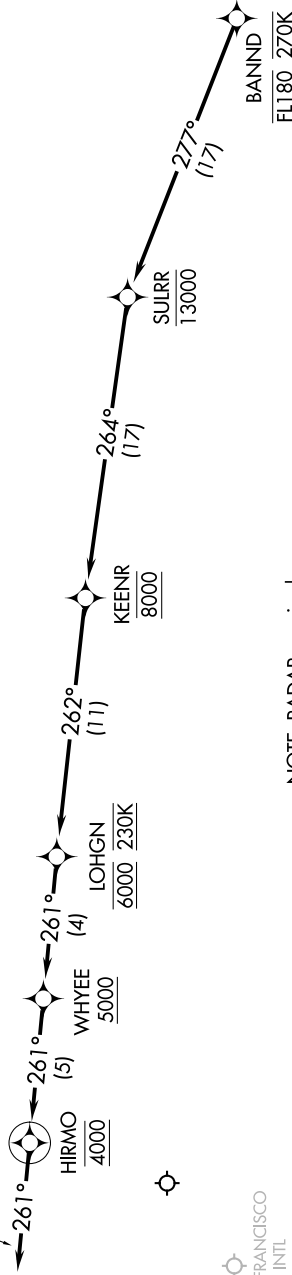
SW-2, 10 OCT 2019 to 07 NOV 2019

ARRIVAL ROUTE DESCRIPTION

LANDING RUNWAY 12: From BANND on track 277° to cross SULRR at or below 13000, then on track 264° to cross KEENR at 8000, then on track 262° to cross LOHGN at 6000 and at 230K, then on track 261° to cross WHYEE at or above 5000, then on track 261° to cross HIRMO at 4000, then on track 261°. Expect RADAR vectors to final approach course.

- OAKLAND CENTER
134.37 281.5
- NORCAL APP CON
124.8 263.15
- D-ATIS
133.775
- OAKLAND TOWER
127.2 256.9 (Rwy 12)
- GND CON
121.75 (Rwy 12)

KOAK Ldg Rwy 12



NOTE: RADAR required.
NOTE: RNAV 1.
NOTE: DME/DME/IRU or GPS required.

SAN FRANCISCO INTL

NORMAN Y MINETA SAN JOSE INTL

NOTE: Chart not to scale.

BANND TWO ARRIVAL (RNAV) Arrival Routes

SW-2, 10 OCT 2019 to 07 NOV 2019