

CNDEL FOUR DEPARTURE (RNAV)

AL-294 (FAA)

D-ATIS 133.775
 CLNC DEL
 121.1
 CPDLC
 GND CON
 121.9 (Rwys 28L/R)
 121.75 (Rwy 30)
 OAKLAND TOWER
 118.3 291.65 (Rwys 28L/R)
 127.2 256.9 (Rwy 30)
 NORCAL DEP CON
 135.1 307.2

TOP ALTITUDE:
10000

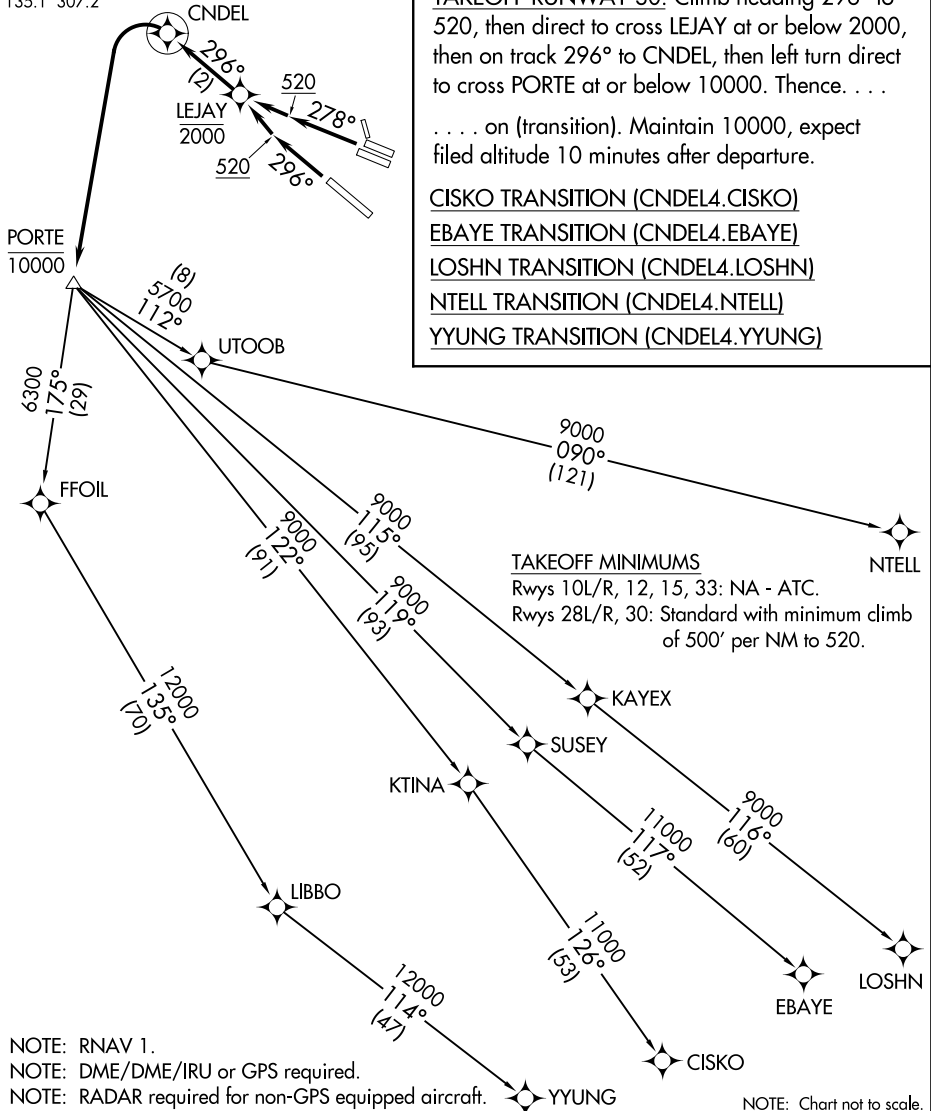
DEPARTURE ROUTE DESCRIPTION

TAKEOFF RUNWAYS 28L, 28R: Climb heading 278° to 520, then direct to cross LEJAY at or below 2000, then on track 296° to CNDEL, then left turn direct to cross PORTE at or below 10000. Thence. . . .

TAKEOFF RUNWAY 30: Climb heading 296° to 520, then direct to cross LEJAY at or below 2000, then on track 296° to CNDEL, then left turn direct to cross PORTE at or below 10000. Thence. . . .

. . . . on (transition). Maintain 10000, expect filed altitude 10 minutes after departure.

- CISKO TRANSITION (CNDEL4.CISKO)
- EBAYE TRANSITION (CNDEL4.EBAYE)
- LOSHN TRANSITION (CNDEL4.LOSHN)
- NTELL TRANSITION (CNDEL4.NTELL)
- YYUNG TRANSITION (CNDEL4.YYUNG)



SW-2, 10 OCT 2019 to 07 NOV 2019

SW-2, 10 OCT 2019 to 07 NOV 2019

CNDEL FOUR DEPARTURE (RNAV)