

LOC I-AAZ 111.9	APP CRS 116°	Rwy Idg 10000
	TDZE 9	
	Apt Elev 9	

ILS RWY 12 (SA CAT I)

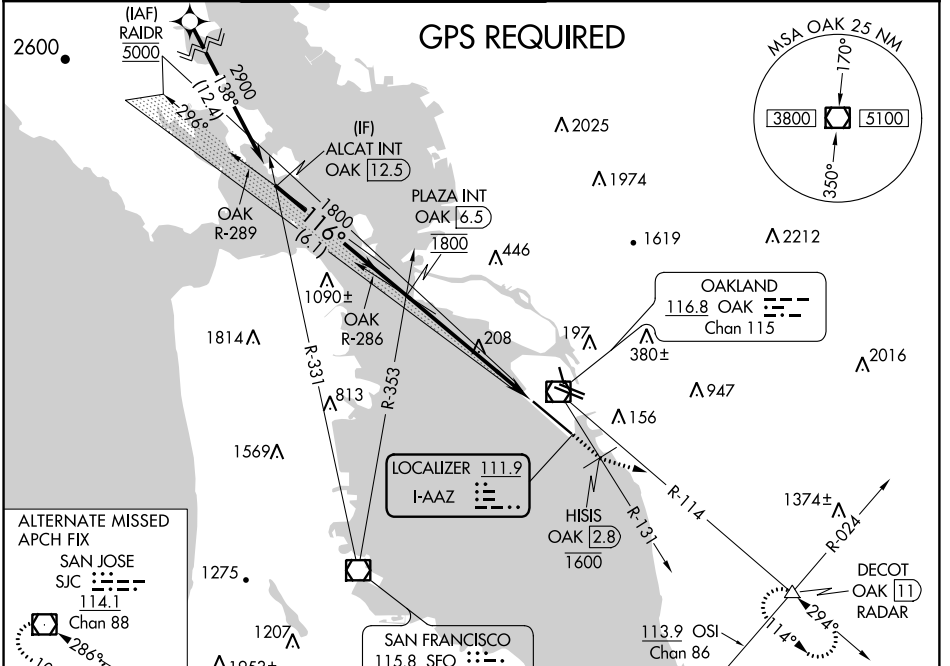
METROPOLITAN OAKLAND INTL (OAK)

⚠ DME required.
Requires specific OPSPEC, MSPEC, or LOA approval and use of HUD to DH.



MISSED APPROACH: Climb on heading 116° and on OAK VOR/DME R-131 to cross HISIS/OAK 2.8 DME at or below 1600 then climb to 5100 on heading 090° and on OAK VOR/DME R-114 to DECOT INT/OAK 11 DME/RADAR and hold, continue climb-in-hold to 5100.

D-ATIS 133.775	NORCAL APP CON 125.35 263.15	OAKLAND TOWER 118.3 291.65 (Rwys 10L/R-28L/R, 15-33) 127.2 256.9 (Rwy 12-30)	GND CON 121.9 (Rwys 10L/R-28L/R, 15-33) 121.75 (Rwy 12-30)	CLNC DEL 121.1	CPDLC
--------------------------	--	--	--	--------------------------	-------



SW-2, 10 OCT 2019 to 07 NOV 2019

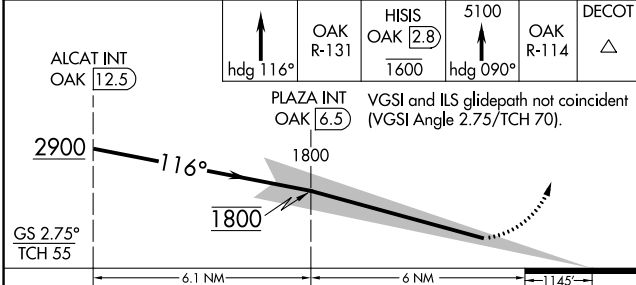
SW-2, 10 OCT 2019 to 07 NOV 2019

ALTERNATE MISSED APCH FIX

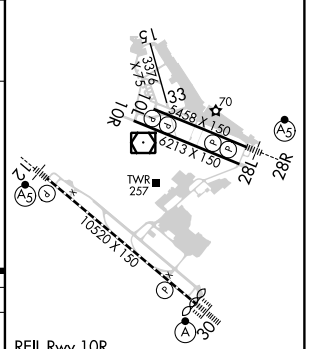
SAN JOSE SJC
114.1
Chan 88

286° R-106

ELEV 9	D TDZE 9
--------	-----------------



CATEGORY	A	B	C	D
S-ILS 12	RA 153/24 150 DA 159			



SA CATEGORY I ILS - SPECIAL AIRCREW & AIRCRAFT CERTIFICATION REQUIRED

REIL Rwy 10R
TDZ/CL Rwy 30
MIRL Rwy 15-33
HIRL Rwys 12-30, 10L-28R, 10R-28L