

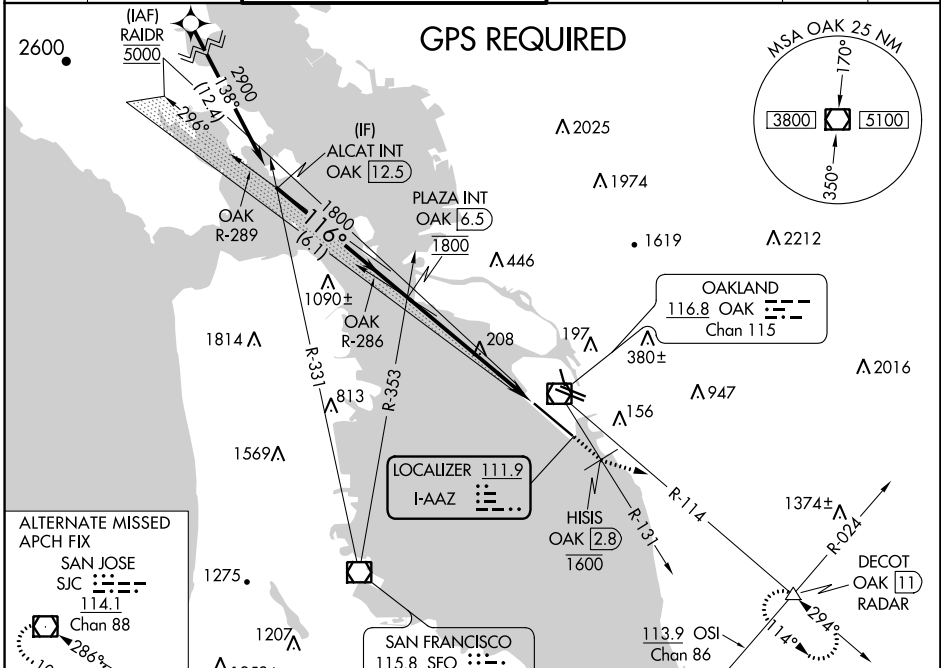
LOC I-AAZ 111.9	APP CRS 116°	Rwy Idg 10000
	TDZE 9	
	Apt Elev 9	

ILS or LOC RWY 12

METROPOLITAN OAKLAND INTL (OAK)

▼ DME required. ▲ *RVR 1800 authorized with the use of FD or AP or HUD to DA.	MALS R 	MISSED APPROACH: Climb on heading 116° and on OAK VOR/DME R-131 to cross HISIS/OAK 2.8 DME at or below 1600 then climb to 5100 on heading 090° and on OAK VOR/DME R-114 to DECOT INT/OAK 11 DME/RADAR and hold, continue climb-in-hold to 5100.	

D-ATIS 133.775	NORCAL APP CON 125.35 263.15	OAKLAND TOWER 118.3 291.65 (Rwys 10L/R-28L/R, 15-33) 127.2 256.9 (Rwy 12-30)		GND CON 121.9 (Rwys 10L/R-28L/R, 15-33) 121.75 (Rwy 12-30)	CLNC DEL 121.1	CPDLC
--------------------------	--	--	--	--	--------------------------	-------

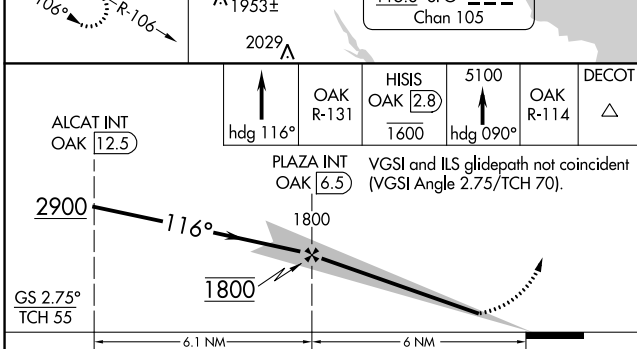


ALTERNATE MISSED APCH FIX

SAN JOSE
SJC
114.1
Chan 88

286° R-106

106°



ELEV 9	D TDZE 9
--------	-----------------

REIL Rwy 10R
TDZ/CL Rwy 30
MIRL Rwy 15-33
HIRL Rwys 12-30, 10L-28R, 10R-28L

FAF to MAP 6 NM

Knots	60	90	120	150	180
Min:Sec	6:00	4:00	3:00	2:24	2:00

CATEGORY	A	B	C	D
S-ILS 12*	209/24		200 (200-½)	
S-LOC 12	460/24 451 (500-½)		460/45 451 (500-¾)	
C CIRCLING	560-1 551 (600-1)		660-1¼ 651 (700-1¼) 1400-3 1391 (1400-3)	

SW-2, 10 OCT 2019 to 07 NOV 2019

SW-2, 10 OCT 2019 to 07 NOV 2019