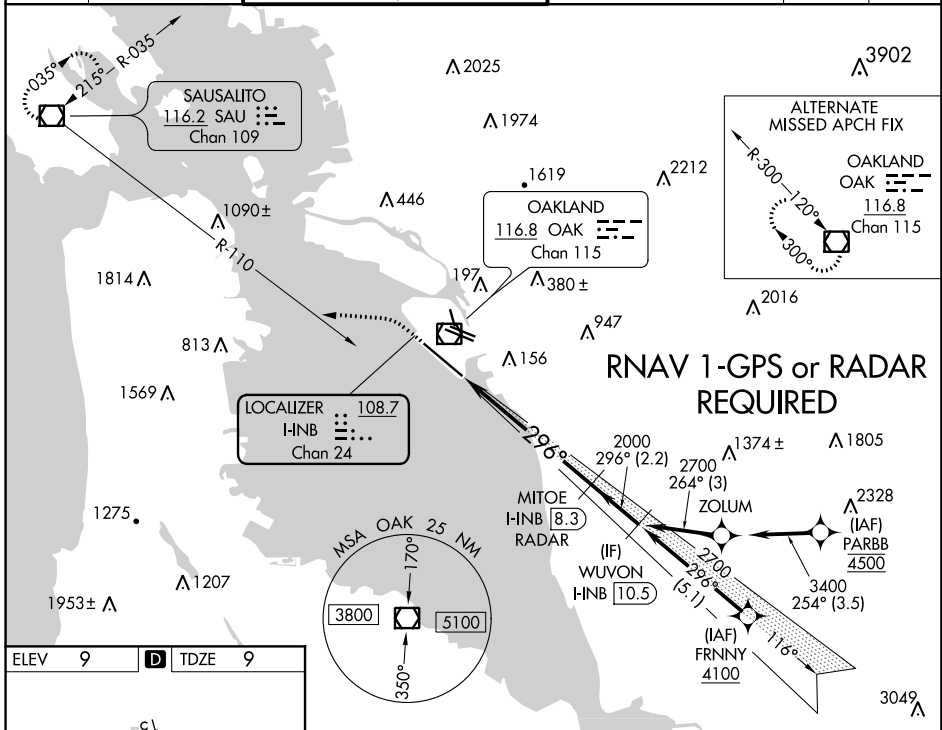


LOC/DME I-INB 108.7 Chan 24	APP CRS 296°	Rwy Idg TDZE Apt Elev 10000 9 9
--	------------------------	---

ILS or LOC RWY 30

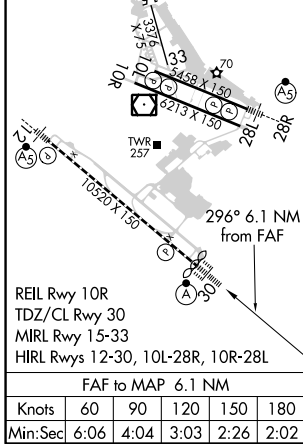
METROPOLITAN OAKLAND INTL (OAK)

DME or RADAR required.		ALSF-2 	MISSED APPROACH: Climb to 600 then climbing left turn to 4000 on heading 260° and on SAU VOR/DME R-110 to SAU VOR/DME and hold, continue climb-in-hold to 4000.			
D-ATIS 133.775	NORCAL APP CON 125.35 263.15	OAKLAND TOWER 118.3 291.65 (Rwys 10L/R-28L/R, 15-33) 127.2 256.9 (Rwy 12-30)		GND CON 121.9 (Rwys 10L/R-28L/R, 15-33) 121.75 (Rwy 12-30)	CLNC DEL 121.1	CPDLC



SW-2, 10 OCT 2019 to 07 NOV 2019

SW-2, 10 OCT 2019 to 07 NOV 2019



600	4000	SAU R-110	SAU	VGSI and ILS glidepath not coincident (VGSI Angle 3.00/TCH 71).	WUVON I-INB [10.5]
*LOC only H-INB [2.2] *I-INB [3.5] MITOE I-INB [8.3] RADAR 2000 296° 2700 GS 3.00° TCH 55					
CATEGORY	A	B	C	D	
S-ILS 30	209/18				200 (200-½)
S-LOC 30	500/24	491 (500-½)	500/50	491 (500-1)	
CIRCLING	560-1	551 (600-1)	660-1¾ 651 (700-1¾)	1400-3 1391 (1400-3)	