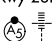


LOC I-OAK	APP CRS	Rwy Idg	28R	28L
<b>109.9</b>	<b>278°</b>	TDZE	<b>5458</b>	<b>6213</b>
		Apt Elev	<b>7</b>	<b>9</b>

# ILS or LOC/DME RWY 28R

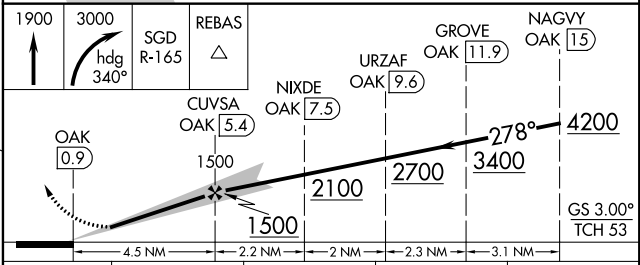
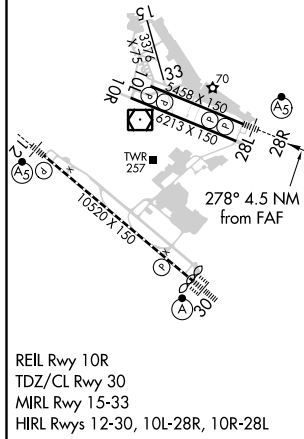
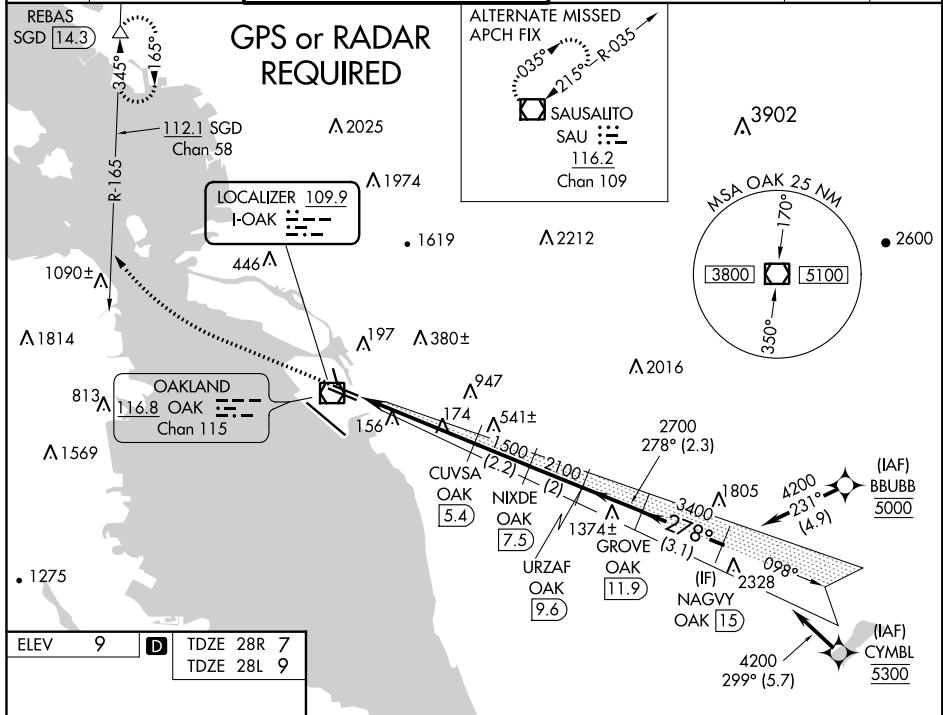
## METROPOLITAN OAKLAND INTL (OAK)

**⚠** DME required. DME from OAK VOR/DME. Simultaneous reception of I-OAK and OAK DME required.  
 \*RVR 1800 authorized with use of FD or AP or HUD to DA.

MALSR Rwy 28R 

MISSED APPROACH: Climb to 1900 then climbing right turn to 3000 on heading 340° and SGD VORTAC R-165 to REBAS/SGD 14.3 DME and hold.

D-ATIS <b>133.775</b>	NORCAL APP CON <b>125.35 263.15</b>	OAKLAND TOWER <b>118.3 291.65</b> (Rwys 10L/R-28L/R, 15-33) <b>127.2 256.9</b> (Rwy 12-30)	GND CON <b>121.9</b> (Rwys 10L/R-28L/R, 15-33) <b>121.75</b> (Rwy 12-30)	CLNC DEL <b>121.1</b>	CPDLC
--------------------------	--	--	--	--------------------------	-------



CATEGORY	A	B	C	D
*S-ILS 28R	207/24		200 (200-½)	
S-LOC 28R	440/24		433 (500-½)	
SIDESTEP 28L	440/55	431 (500-1)		440-1½ 431 (500-1½)
<b>☑</b> CIRCLING	560-1 551 (600-1)		660-1¾ 651 (700-1¾)	1400-3 1391 (1400-3)

SW-2, 10 OCT 2019 to 07 NOV 2019

SW-2, 10 OCT 2019 to 07 NOV 2019