

D-ATIS  
133.775  
CLNC DEL  
121.1  
CPDLC  
NORCAL DEP CON  
120.9 323.2

**TOP ALTITUDE:  
ASSIGNED BY ATC**

MENDOCINO  
112.3 ENI   
Chan 70  
N39°03.19'-W123°16.46'  
L-2, H-3

RED BLUFF  
115.7 RBL   
Chan 104  
N40°05.93'-W122°14.18'  
L-2, H-3

SACRAMENTO  
115.2 SAC   
Chan 99  
N38°26.62'-W121°33.10'  
L-2-3, H-3

ORRCA  
N38°26.62'  
W121°33.10'

SCAGGS ISLAND  
112.1 SGD   
Chan 58  
N38°10.76'-W122°22.39'  
L-2-3

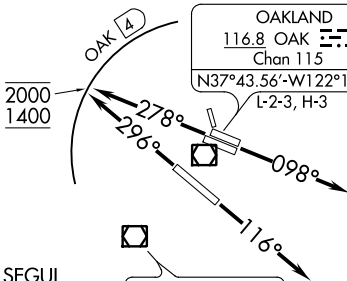
GRTFL  
N38°21.13'  
W122°13.89'

DEDHD  
N38°20.13'  
W122°06.77'

MOGEE  
N38°20.17'  
W121°23.38'

TIPRE  
N38°12.35'  
W121°02.15'

ALCOA  
N37°50.00'  
W125°50.07'  
▲ H-3



OAKLAND  
116.8 OAK   
Chan 115  
N37°43.56'-W122°13.42'  
L-2-3, H-3

SYRAH  
N37°59.46'  
W121°06.19'

LINDEN  
114.8 LIN   
Chan 95  
N38°04.47'  
W121°00.23'  
L-2-3, H-3

BEBOP  
N37°00.00'  
W125°00.07'  
▲ H-3

SEGUL  
N36°57.78'  
W122°34.33'  
△

WOODSIDE  
113.9 OSI   
Chan 86  
N37°23.55'  
W122°16.88'  
L-2-3, H-3

NTELL  
N36°53.98'  
W119°53.37'

CINNY  
N36°10.90'  
W124°45.60'  
◆ H-3

CYPRS  
N36°25.34'  
W122°25.93'  
△

PANOCHÉ  
112.6 PXN   
Chan 73  
N36°42.93'-W120°46.72'  
L-3, H-3

EBAYE  
N35°52.12'  
W120°15.63'

LOSHN  
N35°50.86'  
W120°00.03'

### TAKEOFF MINIMUMS

Rwys 15, 33: NA- ATC.

Rwy 10L: Standard with minimum climb of 340' per NM to 2300.

Rwy 10R: Standard with minimum climb of 330' per NM to 2300.

Rwy 12: Standard with minimum climb of 270' per NM to 1400.

Rwys 28L/R, 30: Standard with minimum climb of 375' per NM to 2000.

NOTE: RADAR required.

NOTE: DME required.

NOTE: Use the SILENT DEPARTURE during the periods of 2200-0700 local in lieu of the OAKLAND DEPARTURE.

(NARRATIVE ON FOLLOWING PAGE)

CISKO  
N35°41.85'  
W120°27.91'

AVENAL  
117.1 AVE   
Chan 118  
N35°38.82'-W119°58.72'  
L-3-7, H-4

FELLOWS  
117.5 FLW   
Chan 122  
N35°05.59'-W119°51.93'  
L-3-7, H-4

NOTE: Chart not to scale.

SW-2, 10 OCT 2019 to 07 NOV 2019

SW-2, 10 OCT 2019 to 07 NOV 2019