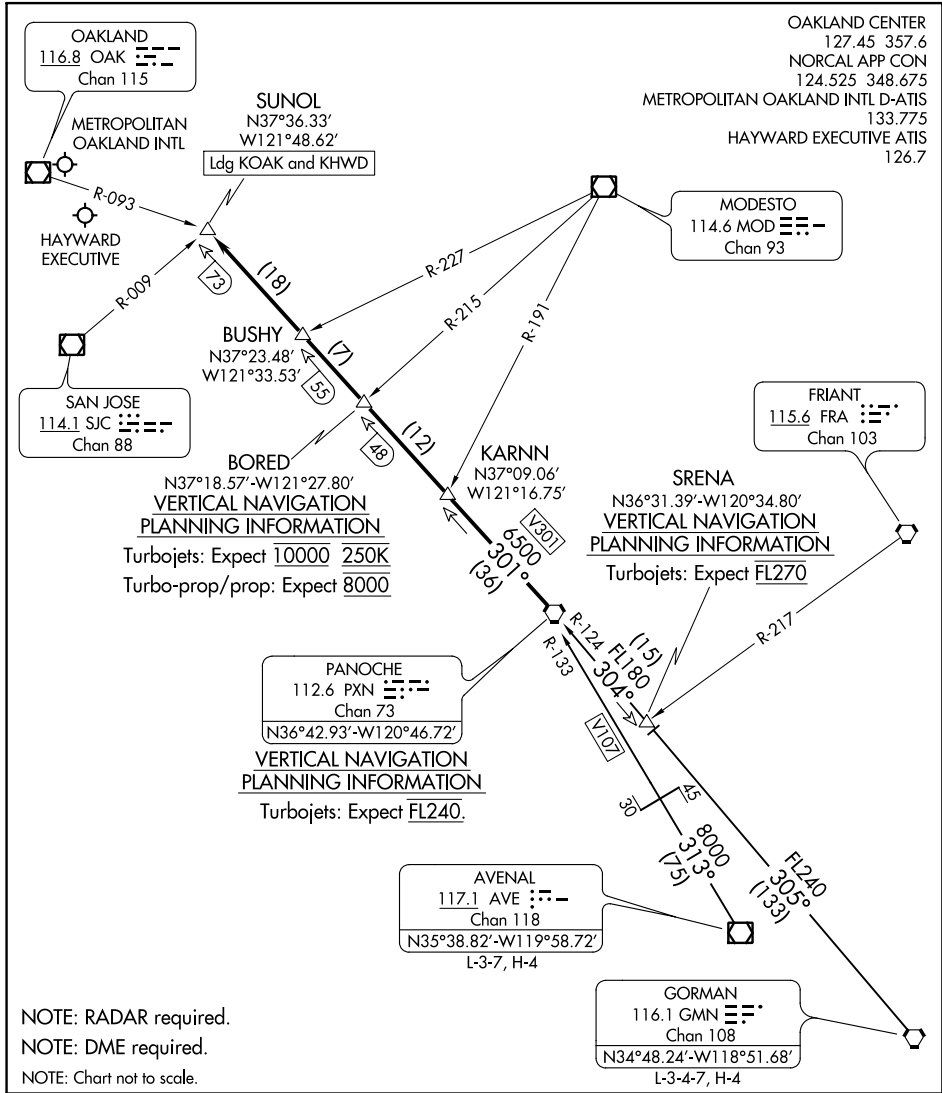


PANOCHÉ SIX ARRIVAL

AL-294 (FAA)

OAKLAND, CALIFORNIA



SW-2, 10 OCT 2019 to 07 NOV 2019

SW-2, 10 OCT 2019 to 07 NOV 2019

ARRIVAL ROUTE DESCRIPTION

AVENAL TRANSITION (AVE.PXN6): From over AVE VOR/DME on AVE R-313 and PXN R-133 to PXN VORTAC. Thence. . . .

GORMAN TRANSITION (GMN.PXN6): From over GMN VORTAC on GMN R-305 and PXN R-124 to SRENA, then on PXN R-124 to PXN VORTAC. Thence. . . .

. . . .From over PXN VORTAC on PXN R-301 to SUNOL. Expect RADAR vectors to final approach course.

PANOCHÉ SIX ARRIVAL