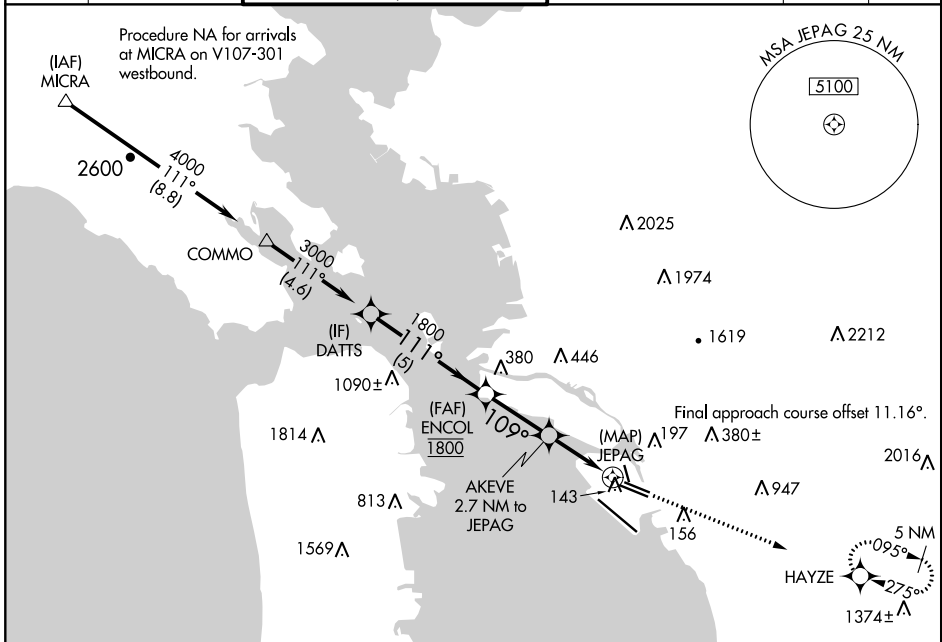


APP CRS	Rwy Idg	<b>5336</b>
<b>109°</b>	TDZE	<b>6</b>
	Apt Elev	<b>9</b>

# RNAV (GPS) RWY 10L

METROPOLITAN OAKLAND INTL (OAK)

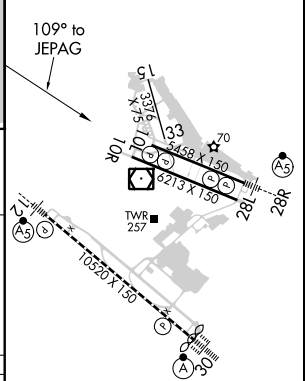
<p><b>▽</b> DME/DME RNP-0.3 NA.  <b>▲</b> Helicopter visibility reduction below 3/4 SM not authorized.</p>	<p>OAKLAND TOWER                  118.3 291.65 (Rwys 10L/R-28L/R, 15-33)                  127.2 256.9 (Rwy 12-30)</p>		<p>GND CON                  121.9 (Rwys 10L/R-28L/R, 15-33)                  121.75 (Rwy 12-30)</p>		<p>CLNC DEL                  121.1</p>	<p>CPDLC</p>
	<p>D-ATIS                  133.775</p>	<p>NORCAL APP CON                  125.35 263.15</p>				



SW-2, 10 OCT 2019 to 07 NOV 2019

SW-2, 10 OCT 2019 to 07 NOV 2019

ELEV 9	<b>D</b> TDZE 6
--------	-----------------



	<p>DATTS 3000 ENCOL 1800 AKEVE 1000</p>		<p>5200 HAYZE</p>	
	<p>VGSI and descent angles not coincident (VGSI Angle 3.00/TCH 50).</p>			
	<p>TCH 49</p>			
	<p>2.79°</p>			
	<p>2.7 NM to JEPAG</p>			
	<p>0.9 NM to JEPAG</p>			
	<p>5 NM</p>			
	<p>2.7 NM</p>			
	<p>1.8 NM</p>			
	<p>0.9</p>			
	<p>0.5</p>			

CATEGORY	A	B	C	D	
RNAV MDA	500-1	494 (500-1)	500-1 3/8	494 (500-1 3/8)	
<b>C</b> CIRCLING	560-1	551 (600-1)	660-1 3/4 651 (700-1 3/4)	1380-3 1371 (1400-3)	
					REIL Rwy 10R TDZ/CL Rwy 30 MIRL Rwy 15-33 HIRL Rwys 12-30, 10L-28R, 10R-28L